

# SPEEDSQUEEGEE® HD



**PREASSEMBLED WITH THREADED HANDLE ADAPTER**



## GRAY EPDM

A favorite among epoxy flooring, deck coating and decorative concrete contractors. Gray EPDM has excellent chemical resistance, is moderately stiff and is non-marking. Has a heavy-duty polymer threaded handle adapter.

## RED RUBBER

The choice among epoxy flooring, deck coating, and decorative concrete contractors who prefer a softer blade. Red rubber provides excellent chemical resistance and is non-marking. Has a heavy-duty polymer threaded handle adapter.

Item No.	Description
47174	Speed Squeegee® HD, 24", Threaded Handle Adapter, Flat, Gray EPDM Blade
47175	Speed Squeegee® HD, 24", Threaded Handle Adapter, 1/8" W x 1/16" D (8-12 mil), Gray EPDM Blade
47176	Speed Squeegee® HD, 24", Threaded Handle Adapter, 3/16 W x 3/32" D (15-20 mil), Gray EPDM Blade
47177	Speed Squeegee® HD, 24", Threaded Handle Adapter, 1/4" W x 1/8" D (20-28 mil), Gray EPDM Blade

Item No.	Description
47150	Speed Squeegee® HD, 24", Threaded Handle Adapter, Flat, Red Rubber Blade
47151	Speed Squeegee® HD, 24", Threaded Handle Adapter, 1/8" W x 1/16" D (8-12 mil), Red Rubber Blade
47152	Speed Squeegee® HD, 24", Threaded Handle Adapter, 3/16 W x 3/32" D (15-20 mil), Red Rubber Blade
47153	Speed Squeegee® HD, 24", Threaded Handle Adapter, 1/4" W x 1/8" D (20-28 mil), Red Rubber Blade

## NOMINAL WET FILM THICKNESS CHART

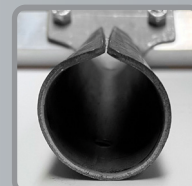
Description	Notch Width	Notch Depth	WFT (in Mils*)
1/8" V-Notch	1/8"	1/16"	8 - 12
3/16" V-Notch	3/16"	3/32"	15 - 20
1/4" V-Notch	1/4"	1/8"	20 - 28
3/8" V-Notch	3/8"	1/4"	30 - 45
1/2" V-Notch	1/2"	3/8"	46-55

What squeegee notch width / notch depth should I use to apply 10 mils of epoxy? At Midwest Rake®, the answer is **always** refer to our "Nominal Wet Film Thickness Chart" to determine the appropriate notch width / notch depth required for your job. Our squeegee blades have a unique design - shallower depth notches enable Midwest Rake® squeegees to stand out from the competition ensuring a consistent and tight range of wet film thickness delivery.

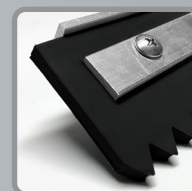
This chart conversions are not absolutes and are provided to help guide blade selection. Many factors can contribute to the actual wet film thickness produced; including: pressure exerted on the blade, porosity of the substrate (concrete) being coated, material being used and if and how the back-roll is completed. If you have any questions or would like to discuss the particulars of your project - please contact us at 844-SEYMOUR and we would be more than happy to provide guidance in the application squeegee selection process.



# SPEEDSQUEEGEE® HD



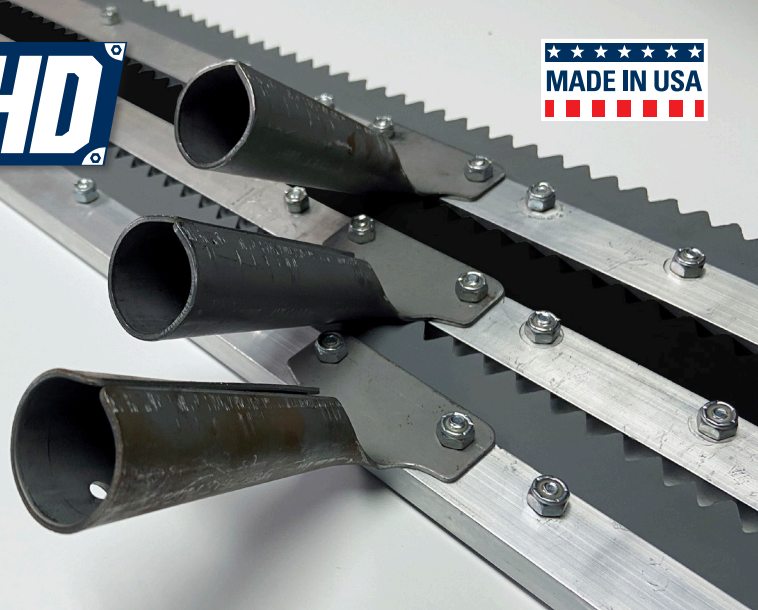
TAPERED HANDLE  
ADAPTER



HEAVY-DUTY  
RUBBER BLADE

SMW #	DESCRIPTION	PACK QTY
47511-B	Speed Squeegee® HD, 24", Tapered Adapter, Flat, Black Rubber	6
47511-B8	Speed Squeegee® HD, 24", Tapered Adapter, 1/8" W x 1/16" D (8-12 Mil), Black Rubber	6
47511-B15	Speed Squeegee® HD, 24", Tapered Adapter, 3/16" W x 3/32" D (15-20 Mil), Black Rubber	6
47511-B20	Speed Squeegee® HD, 24", Tapered Adapter, 1/4" W x 1/8" D (20-28 Mil), Black Rubber	6
47511-B30	Speed Squeegee® HD, 24", Tapered Adapter, 3/8" W x 1/4" D (30-45 Mil), Black Rubber	6
47511-B46	Speed Squeegee® HD, 24", Tapered Adapter, 1/2" W x 3/8" D (46-55 Mil), Black Rubber	6
47511-B56	Speed Squeegee® HD, 24", Tapered Adapter, (56-74 Mil), Black Rubber	6
47511-B75	Speed Squeegee® HD, 24", Tapered Adapter, (75+ Mil), Black Rubber	6
47511-G	Speed Squeegee® HD, 24", Tapered Adapter, Flat, Gray Rubber	6
47511-G8	Speed Squeegee® HD, 24", Tapered Adapter, 1/8" W x 1/16" D (8-12 Mil), Gray Rubber	6
47511-G15	Speed Squeegee® HD, 24", Tapered Adapter, 3/16" W x 3/32" D (15-20 Mil), Gray Rubber	6
47511-G20	Speed Squeegee® HD, 24", Tapered Adapter, 1/4" W x 1/8" D (20-28 Mil), Gray Rubber	6
47511-G30	Speed Squeegee® HD, 24", Tapered Adapter, 3/8" W x 1/4" D (30-45 Mil), Gray Rubber	6
47511-G46	Speed Squeegee® HD, 24", Tapered Adapter, 1/2" W x 3/8" D (46-55 Mil), Gray Rubber	6
47511-G56	Speed Squeegee® HD, 24", Tapered Adapter, (56-74 Mil), Gray Rubber	6
47511-G75	Speed Squeegee® HD, 24", Tapered Adapter, (75+ Mil), Gray Rubber	6
47512-B	Speed Squeegee® HD, 30", Tapered Adapter, Flat, Black Rubber	6
47512-B8	Speed Squeegee® HD, 30", Tapered Adapter, 1/8" W x 1/16" D (8-12 Mil), Black Rubber	6
47512-B15	Speed Squeegee® HD, 30", Tapered Adapter, 3/16" W x 3/32" D (15-20 Mil), Black Rubber	6
47512-B20	Speed Squeegee® HD, 30", Tapered Adapter, 1/4" W x 1/8" D (20-28 Mil), Black Rubber	6
47512-B30	Speed Squeegee® HD, 30", Tapered Adapter, 3/8" W x 1/4" D (30-45 Mil), Black Rubber	6
47512-B46	Speed Squeegee® HD, 30", Tapered Adapter, 1/2" W x 3/8" D (46-55 Mil), Black Rubber	6
47512-B56	Speed Squeegee® HD, 30", Tapered Adapter, (56-74 Mil), Black Rubber	6
47512-B75	Speed Squeegee® HD, 30", Tapered Adapter, (75+ Mil), Black Rubber	6
47512-G	Speed Squeegee® HD, 30", Tapered Adapter, Flat, Gray Rubber	6
47512-G8	Speed Squeegee® HD, 30", Tapered Adapter, 1/8" W x 1/16" D (8-12 Mil), Gray Rubber	6
47512-G15	Speed Squeegee® HD, 30", Tapered Adapter, 3/16" W x 3/32" D (15-20 Mil), Gray Rubber	6
47512-G20	Speed Squeegee® HD, 30", Tapered Adapter, 1/4" W x 1/8" D (20-28 Mil), Gray Rubber	6
47512-G30	Speed Squeegee® HD, 30", Tapered Adapter, 3/8" W x 1/4" D (30-45 Mil), Gray Rubber	6

IDEAL FOR HIGH VOLUME DECK COATING,  
WATERPROOFING, AND URETHANE INSTALLATIONS  
FIELD TESTED TO BE LIGHTER THAN THE COMPETITION



SMW #	DESCRIPTION	PACK QTY
47512-G46	Speed Squeegee® HD, 30", Tapered Adapter, 1/2" W x 3/8" D (46-55 Mil), Gray Rubber	6
47512-G56	Speed Squeegee® HD, 30", Tapered Adapter, (56-74 Mil), Gray Rubber	6
47512-G75	Speed Squeegee® HD, 30", Tapered Adapter, (75+ Mil), Gray Rubber	6
47513-B	Speed Squeegee® HD, 36", Tapered Adapter, Flat, Black Rubber	6
47513-B8	Speed Squeegee® HD, 36", Tapered Adapter, 1/8" W x 1/16" D (8-12 Mil), Black Rubber	6
47513-B15	Speed Squeegee® HD, 36", Tapered Adapter, 3/16" W x 3/32" D (15-20 Mil), Black Rubber	6
47513-B20	Speed Squeegee® HD, 36", Tapered Adapter, 1/4" W x 1/8" D (20-28 Mil), Black Rubber	6
47513-B30	Speed Squeegee® HD, 36", Tapered Adapter, 3/8" W x 1/4" D (30-45 Mil), Black Rubber	6
47513-B46	Speed Squeegee® HD, 36", Tapered Adapter, 1/2" W x 3/8" D (46-55 Mil), Black Rubber	6
47513-B56	Speed Squeegee® HD, 36", Tapered Adapter, (56-74 Mil), Black Rubber	6
47513-B75	Speed Squeegee® HD, 36", Tapered Adapter, (75+ Mil), Black Rubber	6
47513-G	Speed Squeegee® HD, 36", Tapered Adapter, Flat, Gray Rubber	6
47513-G8	Speed Squeegee® HD, 36", Tapered Adapter, 1/8" W x 1/16" D (8-12 Mil), Gray Rubber	6
47513-G15	Speed Squeegee® HD, 36", Tapered Adapter, 3/16" W x 3/32" D (15-20 Mil), Gray Rubber	6
47513-G20	Speed Squeegee® HD, 36", Tapered Adapter, 1/4" W x 1/8" D (20-28 Mil), Gray Rubber	6
47513-G30	Speed Squeegee® HD, 36", Tapered Adapter, 3/8" W x 1/4" D (30-45 Mil), Gray Rubber	6
47513-G46	Speed Squeegee® HD, 36", Tapered Adapter, 1/2" W x 3/8" D (46-55 Mil), Gray Rubber	6
47513-G56	Speed Squeegee® HD, 36", Tapered Adapter, (56-74 Mil), Gray Rubber	6
47513-G75	Speed Squeegee® HD, 36", Tapered Adapter, (75+ Mil), Gray Rubber	6

IDEAL FOR HIGH VOLUME DECK COATING,  
WATERPROOFING, AND URETHANE  
INSTALLATIONS  
FIELD TESTED TO BE LIGHTER  
THAN THE COMPETITION

## NOMINAL WET FILM THICKNESS CHART

Description	Notch Width	Notch Depth	WFT (in Mils*)
1/8" V-Notch	1/8"	1/16"	8 - 12
3/16" V-Notch	3/16"	3/32"	15 - 20
1/4" V-Notch	1/4"	1/8"	20 - 28
3/8" V-Notch	3/8"	1/4"	30 - 45
1/2" V-Notch	1/2"	3/8"	46-55
56-74 Mils V-Notch	~	~	56-74
75+ Mils V-Notch	~	~	75+

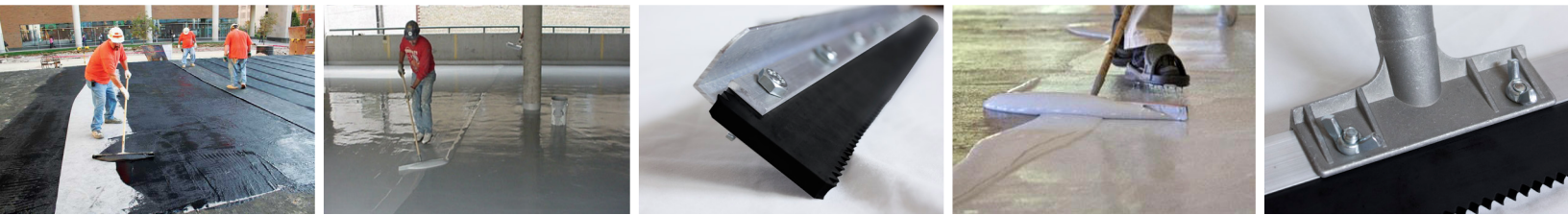
What squeegee notch width / notch depth should I use to apply 10 mils of epoxy? At Midwest Rake®, the answer is **always** refer to our "Nominal Wet Film Thickness Chart" to determine the appropriate notch width / notch depth required for your job. Our squeegee blades have a unique design - shallower depth notches enable Midwest Rake® squeegees to stand out from the competition ensuring a consistent and tight range of wet film thickness delivery.

This chart conversions are not absolutes and are provided to help guide blade selection. Many factors can contribute to the actual wet film thickness produced; including: pressure exerted on the blade, porosity of the substrate (concrete) being coated, material being used and if and how the back-roll is completed. If you have any questions or would like to discuss the particulars of your project - please contact us at 844-SEYMOUR and we would be more than happy to provide guidance in the application squeegee selection process.





MIDWEST RAKE®



## IDEAL FOR HIGH VOLUME DECK-COATING, WATERPROOFING AND URETHANE PRODUCT INSTALLATIONS

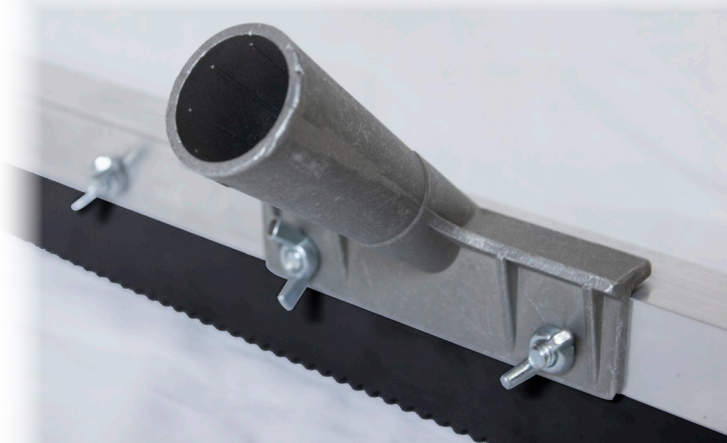
### KEY PRODUCT FEATURES:

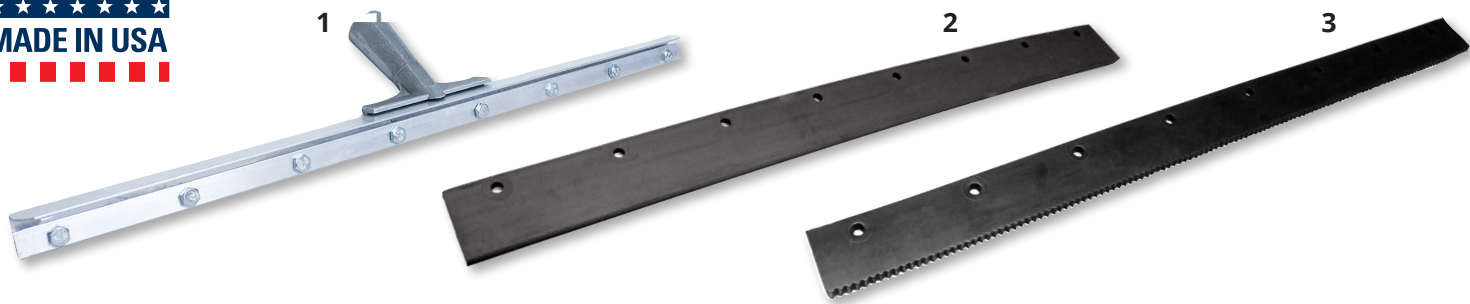
#### FRAMES:

- Heavy-duty aluminum frame **with tapered handle adapter**
- Frame kit includes: frame, clamp, hardware bag and tapered handle adapter
- Product is designed to be easily assembled without tools in just minutes

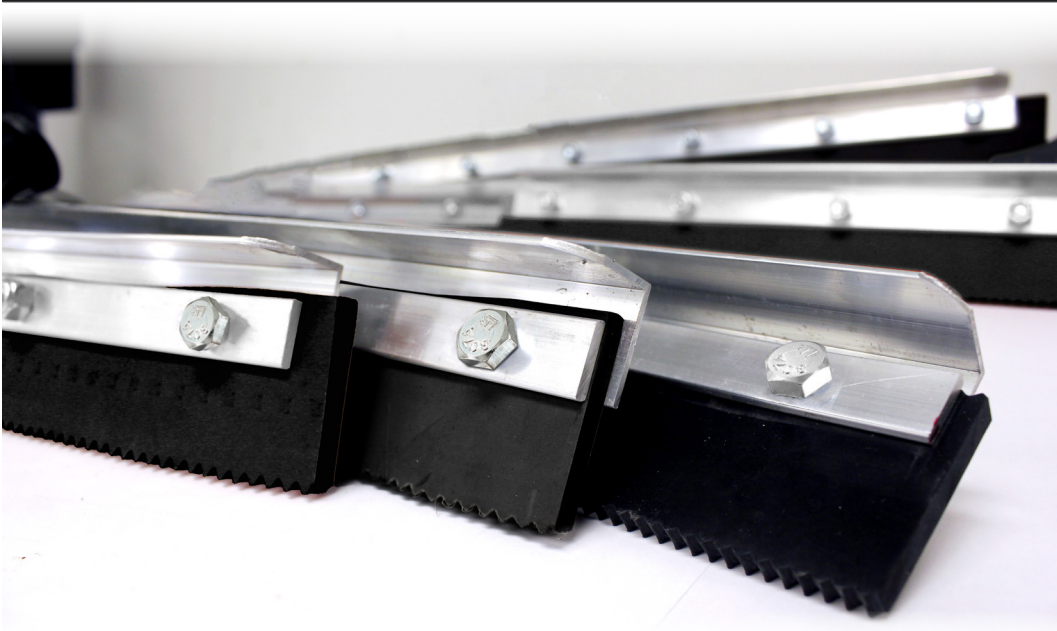
#### BLADES:

- Rubber blade is precut and prepunched allowing for easy assembly on the frame
- Blades are packaged and color-coded to identify both size of notch and approximate WFT delivered
- Blades offered in black neoprene
- **Frames & blades are sold separately**





#	SMW #	DESCRIPTION	PACK QTY
1	47540	Speed Squeegee® HD Frame, 30" Aluminum Head, Tapered Handle Adapter	6
2	47541	Speed Squeegee® HD, 30", Flat, Black Neoprene Blade	6
3	47542	Speed Squeegee® HD, 30", 1/8" W x 1/16" D (8-12 mil), Black Neoprene Blade	6
	47543	Speed Squeegee® HD, 30", 3/16 W x 3/32" D (15-20 mil), Black Neoprene Blade	6
	47544	Speed Squeegee® HD, 30", 1/4" W x 1/8" D (20-28 mil), Black Neoprene Blade	6
	47545	Speed Squeegee® HD, 30", 3/8" W x 1/4" D (30-45 mil), Black Neoprene Blade	6
	47546	Speed Squeegee® HD, 30", 1/2" W x 3/8" D (46-55 mil), Black Neoprene Blade	6
	47547	Speed Squeegee® HD, 30", (56-74 Mil), Black Neoprene Blade	6
	47548	Speed Squeegee® HD, 30", (75+ Mil), Black Neoprene Blade	6
BLADES AND FRAME ARE SOLD SEPARATELY			



What squeegee notch width / notch depth should I use to apply 10 mils of epoxy? At Midwest Rake®, the answer is **always** refer to our "Nominal Wet Film Thickness Chart" to determine the appropriate notch width / notch depth required for your job. Our squeegee blades have a unique design - shallower depth notches enable Midwest Rake® squeegees to stand out from the competition ensuring a consistent and tight range of wet film thickness delivery.

**NOMINAL WET FILM THICKNESS CHART**

Description	Notch Width	Notch Depth	WFT (in Mils*)
1/8" V-Notch	1/8"	1/16"	8 - 12
3/16" V-Notch	3/16"	3/32"	15 - 20
1/4" V-Notch	1/4"	1/8"	20 - 28
3/8" V-Notch	3/8"	1/4"	30 - 45
1/2" V-Notch	1/2"	3/8"	46-55
56-74 Mils V-Notch	~	~	56-74
75+ Mils V-Notch	~	~	75+

The chart conversions above are not absolutes and are provided to help guide blade selection. Many factors can contribute to the actual wet film thickness produced; including: pressure exerted on the blade, porosity of the substrate (concrete) being coated, material being used and if and how the back-roll is completed. If you have any questions or would like to discuss the particulars of your project – please contact us at 844-SEYMOUR and we would be more than happy to provide guidance in the application squeegee selection process.