

MIDWEST RAKE®

COATINGS APPLICATION TOOLS, APPLICATORS & SUPPLIES



SEYMOUR
MIDWEST

FAMILY OWNED AMERICAN TOOL COMPANY SINCE 1872

ABOUT US



Seymour Midwest is a family-owned, global supplier to the hand-tools market, providing both innovative solutions and time-tested products from our manufacturing facilities in Indiana and Tennessee.

The quality, dependability, and performance of our products meet the high standards of those who use tools everyday: contractors, handymen, farmers, ranchers, landscapers and others. Our diverse selection of products and brands allows our customers to order all of their tool needs from a single source.

Beyond best-in-class products, Seymour Midwest is also known as a leader in outstanding customer service, product training, and technical support in all of our business segments.

As a family-owned company, we believe in the values of integrity, quality, commitment, and innovation. We work hard to achieve performance that sets a standard of excellence and to build relationships with our customers that endure, not just because it is good business, but because it is the right thing to do. Today the family-owned company sells over 3,500 tools and 8,000 different repair handles to customers worldwide.

The Midwest Rake® brand is proud to be one of the “founding fathers” in manufacturing quality tools for those contractors who apply and finish protective industrial and marine floor and surface coatings and those concrete “artisans” who have changed the world of concrete forever with their decorative concrete talents.

MIDWEST RAKE®

- **Innovative high quality tools for the coatings industry.**
- **Widest selection of pro-grade tools and supplies for applying coatings and decorative concrete.**
- **Smart new merchandising solutions and displays.**
- **Dedicated and knowledgeable local sales support to help you grow your business.**

TABLE OF CONTENTS

Brooms, Brushes & Scrapers.....	31
CAM® / Gauge Rakes.....	18-20
Footwear.....	4-7
Merchandising Solutions.....	35
Miscellaneous Tools.....	33
Mixers & Measuring Wheels.....	34
Poles & Extension Handles.....	32
Roller Covers & Frames / Chip Brushes	
<i>Specialty Roller Covers.....</i>	<i>23-24</i>
<i>Roller Covers.....</i>	<i>25</i>
<i>Chip Brushes.....</i>	<i>25</i>
<i>Mini Rollers and Frames.....</i>	<i>25</i>
<i>Roller Gauges & End Caps.....</i>	<i>26</i>
<i>Frames.....</i>	<i>26</i>
Spiked / Stub & Ribbed Rollers.....	27-30
Squeegees	
<i>Miscellaneous.....</i>	<i>8</i>
<i>EasySqueegee®.....</i>	<i>9</i>
<i>SpeedSqueegee™.....</i>	<i>10</i>
<i>Application Squeegees / Replacement Blades.....</i>	<i>11-12</i>
<i>SpeedSqueegee HD™.....</i>	<i>13-17</i>
Trowels / Smoothers & Spreaders.....	21-22

SURESPIKES™

SIMPLE CHANGES... BIG DIFFERENCE!

Our new **SURESPIKES™** spiked shoes are certain to become the industry standard when compared to competitive "one-size-fits-all" polypropylene footwear available today.



CUSTOMER TESTIMONIAL:

I would like to tell how great the SURESPIKES™ perform for me. I was coating a floor that already had a trowel down epoxy installed. The new coating was to apply a full flake epoxy floor over what was already installed. I put on a slip-on spike as I normally do and started squeegeeing the epoxy. I noticed that I was slipping and sliding on the floor. The slip-on spikes work fine when the concrete doesn't have a previous coating. I felt unsafe to continue so I stopped my application and put on the SURESPIKES™ and my slipping stopped.

I was able to continue the process of squeegeeing with another person back-rolling and I was able to walk back out to broadcast the flake without any slipping. The SURESPIKES™ made it safe for me to install this floor.

- Bill J, Minnesota



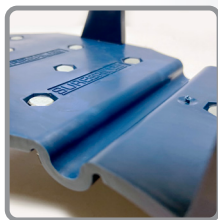
ANGLED SPIKES PROVIDE MORE STABILITY AND DECREASE THE CHANCES OF SLIPPING & FALLING (PATENT PENDING)



1-INCH HARDENED STEEL SPIKES AND NYLOC NUTS PROVIDE IMPROVED DURABILITY AND SPIKES STAY SHARPER LONGER



TOE SPIKES PREVENT THE TIP OF THE SHOE FROM CONTACTING THE FLOOR



FLEXIBLE LIVING HINGE PROVIDES COMFORT & FLEXIBILITY

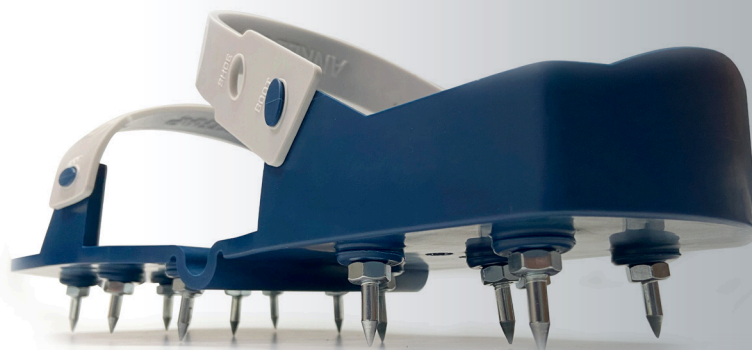


TUG & SNUG RUBBER STRAPS ARE QUICK, EASY, AND EFFICIENT WHEN COMPARED TO CLOTH STRAPS AND BUCKLES



"ONE-SIZE-FITS-ALL" IS PROVEN TO FIT ALMOST ANY SIZE SHOE OR BOOT

SMW #	DESCRIPTION	UPC	PACK QTY
46195	SURESPIKES™ Spiked Shoe	046385461951	6
46198	Replacement Spikes for 46195 (Set of 28 - 14 for Each Shoe)	046385461982	1
46199	Replacement Straps for 46195 (Set of 4 - 2 for Each Shoe)	046385461999	1



"Flexible Bed" Spiked Shoes

- Revolutionary - perfect fit, balance and flexibility
- For use with high performance floor coatings
- The safest spiked shoes available
- Snap-lock buckle system

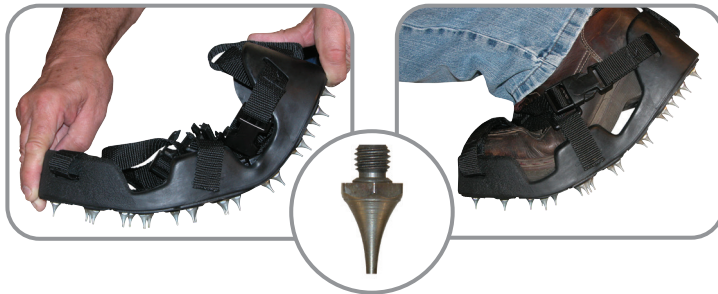
Made for Midwest Rake® by



Korkers



- 20 replaceable spikes per shoe
- Toe and heel guards
- Fits like a shoe



SHARP TIP Flexible Bed Spiked Shoes

Item No. Description

46141	Size Medium (Shoe size 8 to 9-1/2)
46142	Size Large (Shoe size 10 to 11-1/2)
46143	Size Extra-Large (Shoe size 12 to 13-1/2)
46129	Replacement Spikes (set of 40)

1/2" spike length on sharp tip

ROUNDED TIP Flexible Bed Spiked Shoes

Item No. Description

46151	Size Medium (Shoe size 8 to 9-1/2)
46152	Size Large (Shoe size 10 to 11-1/2)
46153	Size Extra-Large (Shoe size 12 to 13-1/2)
46130	Replacement Spikes (set of 40)

7/8" spike length for use with high-build, cementitious and decorative concrete toppings. No more punctured primer coats!

Black Spiked Shoes

- Durable solvent-resistant polypropylene
- Snap-lock buckle system
- Sharp or rounded tip spikes
- 3/4", 1", 1-1/2" & 2" spike lengths
- 13 specially placed spikes per shoe
- Replacement spikes (see below)

Steel Spiked Shoes

- More flexible and durable
- Snap-lock buckle system
- 3/4" or 1" spike lengths
- Replacement spikes (see below)

Non-puncturing
rounded tip
available



A. / B. / C. / D. / E.



F. / G.

Red "Acid-Resistant" Spiked Shoes

- 3/4" acid-resistant stainless steel spikes
- Acid-resistant foot beds
- Snap-lock buckle system
- Replacement sharp spikes (see below)



H.

Asphalt Shoes

- Heavy, riveted felt-soled shoes (pair)
- Contractor's choice for comfort and protection



I.

Item No. Description

A. 46106	Black Spiked Shoes 3/4" Sharp Spikes (Pair)
B. 46107	Black Spiked Shoes 1" Sharp Spikes (Pair)
C. 46110	Black Spiked Shoes 1-1/2" Sharp Spikes (Pair)
D. 46111	Black Spiked Shoes 2" Sharp Spikes (Pair)
E. 46112	Black Spiked Shoes 1" Rounded Spikes (Pair)
F. 46103	Steel Spiked Shoes with 3/4" Sharp Spikes (Pair)
G. 46104	Steel Spiked Shoes with 1" Sharp Spikes (Pair)
H. 46108	Red "Acid-Resistant" Sharp Spiked Shoes (Pair)
I. 46102	Riveted Asphalt Shoes (Pair)

Item No. Description

46120	Replacement Straps for A, B, C, D and G (Set of 4 - 2 Each Shoe)
46121	Replacement Straps for E and F (Set of 6 - 3 Each Shoe)
46122	1" Rounded Tip Replacement Spikes for D (Set of 26 - 13 / Shoe)
46125	3/4" Sharp Tip Replacement Spikes for A & E (Set of 26 - 13 / Shoe)
46126	1" Sharp Tip Replacement Spikes for B & F (Set of 26 - 13 / Shoe)
46127	1-1/2" Sharp Tip Replacement Spikes for C (Set of 26 - 13 / Shoe)
46128	3/4" Acid Resistant Replacement Sharp Spikes for G (Set of 26 - 13 / Shoe)

Concrete Finishing & Resinous Floor Coating Shoes

It's never been easier to install epoxy coatings or self-leveling and decorative overlays. With a patented design, Shoe-In™ Pro shoes are a fantastically simple and affordable solution with multiple applications. Hands free! Put an end to frustrations with straps, buckles and adjustments on traditional floor finishing shoes. Goes over your existing shoes or boots. Stays snug whether you're standing or kneeling. Wide base for stability. Allows you to take protective shoes on and off as needed to get the job done.

APPLICATIONS INCLUDE:

Installing Epoxy Coatings | Installing Concrete & Screed Floors Including Decorative Overlays
Industrial Environments | Renovations or Removals | Any Area Where Flooring Needs Protecting



FLAT STYLE

FOR CONCRETE INSTALLATION.
NO TREAD MARKS OR HEEL MARKS.
IDEAL FOR DECORATIVE CONCRETE STAMPING
AND GENERAL SURFACE TROWELING.



SHARP SPIKED STYLE

3/4" - FOR RESINOUS / EPOXY FLOOR
COATING INSTALLATION. MARK-FREE
INSTALLATIONS. SHARP OR ROUNDED
REPLACEMENT SPIKES ARE AVAILABLE.



ASPHALT STYLE

FOR ASPHALT INSTALLATION.
NO TREAD MARKS OR HEEL MARKS.
IDEAL FOR ASPHALT / BLACKTOP SEALING.

Item No.	Description
46161	Concrete Finishing Shoe – Medium
46162	Concrete Finishing Shoe – Large
46163	Concrete Finishing Shoe – Extra- Large
46170	Spiked Shoes - 3/4" Sharp – Small
46171	Spiked Shoes - 3/4" Sharp – Medium
46172	Spiked Shoes - 3/4" Sharp – Large
46173	Spiked Shoes - 3/4" Sharp – Extra-Large

Item No.	Description
46131	Replacement Spikes – 3/4" Sharp (Set of 32 – 16 Per Shoe)
46132	Replacement Spikes – 1" Rounded (Set of 32 – 16 Per Shoe)
46165	Asphalt Shoe - Size Small
46166	Asphalt Shoe - Size Medium
46167	Asphalt Shoe - Size Large

SIZING - SELECT YOUR SIZE TO FIT OVER EITHER BOOTS OR SNEAKERS

SMALL

FITS BOOT SIZE 8 AND UNDER
FITS SNEAKER SIZE 8 AND UNDER

MEDIUM

FITS BOOT SIZE 9 AND UNDER
FITS SNEAKER SIZE 9 AND UNDER

LARGE

FITS BOOT SIZES 10 TO 11
FITS SNEAKER SIZE 10 TO 12

EXTRA-LARGE

FITS BOOT SIZES 12 TO 16
FITS SNEAKER SIZE 13 TO 16

Plastering & Guniting / Gypsum Shoes

Created for plastering and guniting material installations, Shoe-In™ shoes are designed to provide comfort and ability to quickly remove and reinstall shoes. These trade specific models of Shoe-In™ are offered in both a 2" extra-long 4 spike version and a velcro-bottom reusable sponge flat style version.

The 2" extra long 4 spike version was designed to allow walking in very deep installations of material. The sponge version allows walking on freshly applied material without damaging the finish.

SAVE TIME: Easy-On / Easy-Off | CONVENIENT: No More Tape, No More Leaky Boots
Comfortable | Quality Design | Deep-End Strap



SPIKE PLASTERING STYLE

FOR CONCRETE INSTALLATION.
NO TREAD MARKS OR HEEL MARKS.
IDEAL FOR DECORATIVE CONCRETE STAMPING AND
GENERAL SURFACE TROWELING.

Item No.	Description
46134	Plastering Shoe 4 Spike Replacement (Set of 8 - 4 for Each Shoe)
46181	4 Spike Plastering Shoe - Size Medium
46182	4 Spike Plastering Shoe - Size Large
46183	4 Spike Plastering Shoe - Size X Large



SPONGE FINISHING STYLE

FOR CONCRETE INSTALLATION.
NO TREAD MARKS OR HEEL MARKS.
IDEAL FOR DECORATIVE CONCRETE STAMPING AND
GENERAL SURFACE TROWELING.

Item No.	Description
46192	Sponge Finishing Shoe - Size Large
46193	Sponge Finishing Shoe - Size X Large
46139	Replacement Sponges (Pair)

BEST PRACTICES FOR REMOVAL AND CARE OF SPONGES FOR SHOE-IN™ SPONGE FINISHING SHOES

The sponges are designed to be removed from the shoe after each use and can be used multiple times if properly removed and cleaned after each usage.

SPONGE REMOVAL: slide your thumb between the Velcro on the sponge and the Velcro on the base of the shoe and gently pull off as depicted in the image. Do not remove the sponge by pulling only on the white section of the sponge, this will increase the likelihood of separating the Velcro from the sponge.

SPONGE CLEANING: clean the sponge with warm soapy water. Press the sponge flat to remove excess water and lay the sponges flat to dry. Do not 'twist' or 'wring out' the sponge, this can cause the sponge to tear and separate the Velcro from the sponge.



SIZING - SELECT YOUR SIZE TO FIT OVER EITHER BOOTS OR SNEAKERS

MEDIUM
FITS BOOT SIZE 9 AND UNDER
FITS SNEAKER SIZE 9 AND UNDER

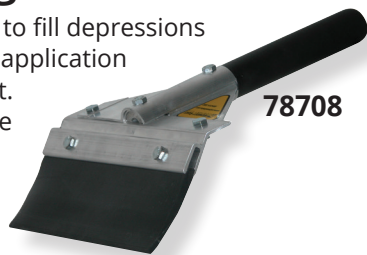
LARGE
FITS BOOT SIZES 10 TO 11
FITS SNEAKER SIZE 10 TO 12

EXTRA-LARGE
FITS BOOT SIZES 12 TO 16
FITS SNEAKER SIZE 13 TO 16

SQUEEGEES - MISCELLANEOUS

Hand-Held Squeegee

The hand-held squeegee is used to fill depressions and cracks in a floor prior to the application of any protective coating product. The blade is clamped in a durable 8" wide aluminum frame, not bolted through, making it easy to replace. The handle is a 6" non-slip vinyl grip over an aluminum core.



78708

Item No. Description

78708	Hand-Held Squeegee, 3" Flexible Rounded Edge Neoprene Blade
SP50070	Replacement Blade for 78708
78709	Hand-Held Squeegee, 2" More Rigid Square Edge Neoprene Blade
SP50129	Replacement Blade for 78709
78108	8" Hand-Held Squeegee Frame

Crack Filler Squeegees

Push/Pull V-Crack Filler Squeegee

The "V" is at a 70 degree angle, using a 1/4" x 2" neoprene rubber blade. The 2" height adds greater containment and control of material.



Lightweight U-Crack Filler Squeegee

This squeegee is easy to use and is great for filling cracks prior to applying floor coatings or seal coating material. The replaceable blade has an inside width of 2-1/2". The blade height is 1-1/4".



For Crack Filler Squeegee Handle Options See Page 32

Item No. Description

46002	Lightweight U-Crack Filler Squeegee
SP50121	Replacement Blade (for 46002)
46001	Heavy-Duty U-Crack Filler Squeegee
SP50120	Replacement Blade (for 46001)
46005	Push / Pull V-Crack Filler Squeegee
SP50122	Replacement Blade (for 46005)

Heavy-Duty U-Crack Filler Squeegee

Steel frame with a 5/16" x 2-1/4" neoprene rubber blade. The 9-1/2" deep by 3" U-shaped cavity holds plenty of material. Replacement blades are available.



Foam Squeegees



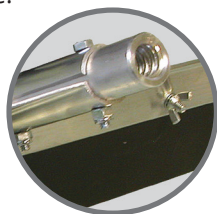
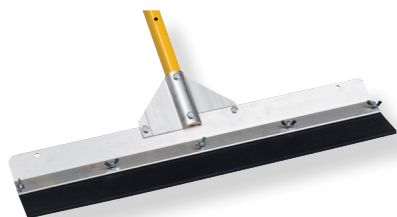
Double edge foam squeegee with tapered handle adapter. Galvanized steel frame with reinforced handle socket.

Item No. Description

47220	Squeegee - Foam Blade, 18"
47222	Squeegee - Foam Blade, 22"
47224	Squeegee - Foam Blade, 30"

Topping and Underlayment "Super Squeegee"

A 24" low-angle / clamp style aluminum frame with a durable aluminum gusset bracing system is combined with a rounded edge, 3" exposed neoprene rubber blade.



Description	Blade Size 24 in.	Blade Size 36 in.
Squeegee with Threaded Handle Adapter	78601	78603
Squeegee with 66" Powder-Coated Aluminum Handle	78602	78604
Replacement Blade	SP50071	SP50072

Window Squeegees



78710



78711



78712

Our window squeegees contain a flat non-marking Nitrile blade, superior & less expensive than red rubber. Can be used as a hand-tool or with a tapered wood handle.

Item No. Description

78710	10" Window Squeegee
78711	12" White Window Squeegee
78712	12" White Heavy-Duty Window Squeegee
SP50130	Replacement Blade for 78710

EASY SQUEEGEE®

CLEANABLE & REUSABLE US PATENT 10,165,923

PRECISION APPLICATION SQUEEGEE SYSTEM

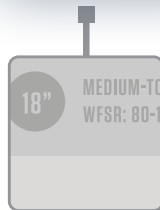
FINALLY A TRULY CLEANABLE & REUSABLE PRECISION APPLICATION SQUEEGEE SYSTEM

The **EasySqueegee®** provides industry leading precision, predictability and versatility when compared to competitive products.

The **self-locating & self-leveling** blades ensure your blade is straight, level and in perfect contact with the floor every time.

The eight unique engineered blades provide a level of versatility and jobsite application options not currently available from any competitive application squeegee tool today.

Cured Coatings Release technology ensures the frame is reusable regardless of the material (Epoxy and Urethanes) you're putting down with the **EasySqueegee®**, once cured the frame can be cleaned.



INTELLIGENT BLADE IDENTIFICATION
All blades inscribed with WFT and WFSR information.



SELF-LEVELING BLADES
Accurate and predictable Wet Film Thickness every time.



SELF-LOCATING BLADES
Designed to provide industry leading accuracy.



PROTECTED THREADS AND FASTENERS
Eliminates material contact with threads.



STEEL THUMB SCREWS REPLACE NUTS
Features Cured Coatings Release Technology for cleanability.

Wet Film Spread Rates (WFSR FT² / Gal.) are not absolute but provided to assist blade selection. Many factors can contribute to the actual WFSR including pressure exerted on the blade, porosity of the substrate being coated, material used and if and how the back-roll is completed. If you have any questions or would like to discuss the particulars of your project please contact us.



FLAT FLEXIBLE



FLAT STIFF



5-7 WFT MILS
WFSR: 230-320 FT² / GAL



8-12 WFT MILS
WFSR: 133-200 FT² / GAL



15-20 WFT MILS
WFSR: 80-106 FT² / GAL



25-30 WFT MILS
WFSR: 53-64 FT² / GAL



40-45 WFT MILS
WFSR: 36-40 FT² / GAL



50-60 WFT MILS
WFSR: 26-32 FT² / GAL

SMW #	DESCRIPTION	UPC	PACK QTY
78255	18" EasySqueegee® Frame with Threaded Handle Adapter	046385782551	1
79853	18" EasySqueegee® with Flat Stiff Blade	046385798538	1
79850	19" EasySqueegee® with Flat Flexible Blade	046385798507	1
79856	18" EasySqueegee® with 5-7 WFT Mils Blade	046385798569	1
79859	18" EasySqueegee® with 8-12 WFT Mils Blade	046385798590	1
79862	18" EasySqueegee® with 15-20 WFT Mils Blade	046385798620	1
79865	18" EasySqueegee® with 25-30 WFT Mils Blade	046385798651	1
79868	18" EasySqueegee® with 40-45 WFT Mils Blade	046385798682	1
79871	18" EasySqueegee® with 50-60 WFT Mils Blade	046385798712	1
78256	26" EasySqueegee® Frame with Threaded Handle Adapter	046385782568	1
79854	26" EasySqueegee® with Flat Stiff Blade	046385798545	1
79851	27" EasySqueegee® with Flat Flexible Blade	046385798514	1
79857	26" EasySqueegee® with 5-7 WFT Mils Blade	046385798576	1
79860	26" EasySqueegee® with 8-12 WFT Mils Blade	046385798606	1
79863	26" EasySqueegee® with 15-20 WFT Mils Blade	046385798637	1
79866	26" EasySqueegee® with 25-30 WFT Mils Blade	046385798668	1
79869	26" EasySqueegee® with 40-45 WFT Mils Blade	046385798699	1
79872	26" EasySqueegee® with 50-60 WFT Mils Blade	046385798729	1
79849	Replacement Fasteners for EasySqueegee® (Bag of 7)	046385798491	1



SPEEDSQUEEGEE™

HOW WE DIFFER FROM THE COMPETITION:

- Designed for applying resinous flooring materials such as epoxy and urethanes.
- Provides industry leading precision, predictability and versatility when compared to competitive products.
- Unique Color Coded Identification of WFT (in mils) and WFSR FT² / Gal.
- Four unique styles of blades (Flat Flex, Flat Stiff, Scalloped Notched and V-Notched) provide the installer with options in the field as to how to best accomplish their project.

COMPLETE READY TO USE TOOL, ONE-PIECE FRAME & BLADE (NOT REPLACEABLE)
POLYMER FRAME WITH THREADED HANDLE ADAPTER
AVAILABLE IN 2 WIDTHS - 18" AND 24"



FLAT FLEXIBLE



FLAT STIFF



5-7 WFT MILS
WFSR: 230-320 FT² / GAL



8-12 WFT MILS
WFSR: 133-200 FT² / GAL



15-20 WFT MILS
WFSR: 80-106 FT² / GAL



25-30 WFT MILS
WFSR: 53-64 FT² / GAL



40-45 WFT MILS
WFSR: 36-40 FT² / GAL



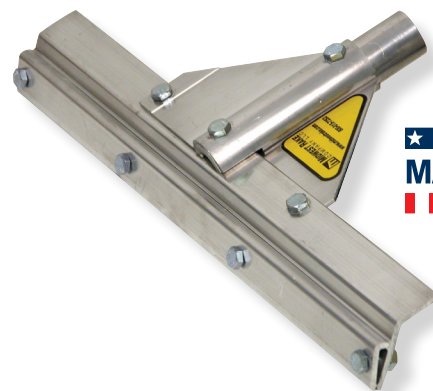
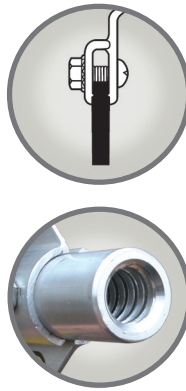
50-60 WFT MILS
WFSR: 26-32 FT² / GAL

SMW #	DESCRIPTION	UPC	PACK QTY
47750	18" SpeedSqueegee™, Flat Stiff Blade	046385477501	6
47751	18" SpeedSqueegee™, Flat Flex Blade	046385477518	6
47756	18" SpeedSqueegee™, 5-7 WFT Mils Blade	046385477563	6
47759	18" SpeedSqueegee™, 8-12 WFT Mils Blade	046385477594	6
47762	18" SpeedSqueegee™, 15-20 WFT Mils Blade	046385477624	6
47765	18" SpeedSqueegee™, 25-30 WFT Mils Blade	046385477655	6
47768	18" SpeedSqueegee™, 40-45 WFT Mils Blade	046385477686	6
47771	18" SpeedSqueegee™, 50-60 WFT Mils Blade	046385477716	6
47850	24" SpeedSqueegee™, Flat Stiff Blade	046385478508	6
47851	24" SpeedSqueegee™, Flat Flex Blade	046385478515	6
47856	24" SpeedSqueegee™, 5-7 WFT Mils Blade	046385478560	6
47859	24" SpeedSqueegee™, 8-12 WFT Mils Blade	046385478591	6
47862	24" SpeedSqueegee™, 15-20 WFT Mils Blade	046385478621	6
47865	24" SpeedSqueegee™, 25-30 WFT Mils Blade	046385478652	6
47868	24" SpeedSqueegee™, 40-45 WFT Mils Blade	046385478683	6
47871	24" SpeedSqueegee™, 50-60 WFT Mils Blade	046385478713	6

Application Squeegees

Step 1 - Choose the frame

Midwest Rake® branded application squeegee frames are the standard in the Protective Coating industry. These “clamp-style” frames make it easy to change blades.



Frame Width

Description	Item No. 16"	Item No. 24"	Item No. 30"	Item No. 36"	Item No. 48"
Application Squeegee Frame with THA*	78000	78010	78015	78020	78040
Application Squeegee Frame with 66" PCAH**	78100	78110	78115	78120	78140
Application Squeegee Frame with 82" PCAH**	78200	78210	78215	78220	78240

*Threaded Handle Adapter **Powder-Coated Aluminum Handle

What squeegee notch width / notch depth should I use to apply 10 mils of epoxy? At Midwest Rake®, the answer is always refer to our “Nominal Wet Film Thickness Chart” to determine the appropriate notch width / notch depth required for your job. Our squeegee blades have a unique design - shallower depth notches enable Midwest Rake® squeegees to stand out from the competition ensuring a consistent and tight range of wet film thickness delivery.

**The chart conversions to the right are not absolutes and are provided to help guide blade selection. Many factors can contribute to the actual wet film thickness produced; including: pressure exerted on the blade, porosity of the substrate (concrete) being coated, material being used and if and how the back-roll is completed. If you have any questions or would like to discuss the particulars of your project – please contact us at 844-SEYMOUR and we would be more than happy to provide guidance in the application squeegee selection process.*

NOMINAL WET FILM THICKNESS CHART

Description	Notch Width	Notch Depth	Nominal Wet Film (WFT) Delivered in Mils*
1/8" V-Notch	1/8"	1/16"	8 - 12
3/16" V-Notch	3/16"	3/32"	15 - 20
1/4" V-Notch	1/4"	1/8"	20 - 28
3/8" V-Notch	3/8"	1/4"	30 - 45
1/2" V-Notch	1/2"	3/8"	46-55
56-74 Mil V-Notch			56-74
75+ Mil V-Notch			75+

NEW

Step 2a - Choose the blade, 25' rolls

Our blades are available in TPV, EPDM, Red Rubber, and High-Heat Silicone. Most blades are “reversible” (notched on both sides). Each type is available in various notch sizes. See page 12 for variable width blades if you don't need rolls.



Black TPV



EPDM

Chemical Resistant / Non-marking



Red Rubber

Chemical Resistant / Non-marking



High Heat Silicone

450° F Heat Resistance / Notched on One Side

EXCLUSIVE
Rubber is also available by the roll.



Our standard TPV, EPDM, Red Rubber, and High-Heat Silicone are available in 25' rolls. Please see the chart below for product information.

Description	Black TPV Notched on both sides	Standard EPDM Notched on both sides	2" Red Rubber Notched on both sides	High-Heat Silicone Notched on one side
25' Roll No-Notch (Flat) Rubber	79405	79505	79605	79405-HH
25' Roll 1/8" Notch Rubber	79410	79510	79610	79410-HH
25' Roll 3/16" Notch Rubber	79415	79515	79615	79415-HH
25' Roll 1/4" Notch Rubber	79420	79520	79620	79420-HH
25' Roll 3/8" Notch Rubber	79425	79525	79625	79425-HH
25' Roll 1/2" Notch Rubber	79430	79530	79630	79430-HH
25' Roll 56-74 Mil Notch Rubber	~	~	~	79435-HH
25' Roll 75+ Mil Notch Rubber	~	~	~	79440-HH

High Heat Silicone only available in 25' rolls.

NEW

SQUEEGEES - APPLICATION



Black TPV



EPDM

Chemical Resistant /
Non-marking



Red Rubber

Chemical Resistant /
Non-marking

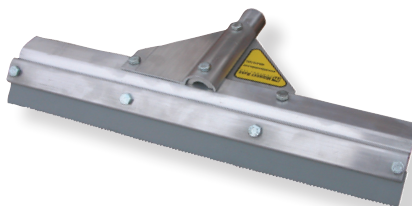
Step 2b - Choose the blade, variable widths

Our blades are available in TPV, EPDM, and Red Rubber. All blades are "reversible" (notched on both sides). Each type is available in a variety of head widths and notch sizes.

Description	Blade Width				
	Item No. 16"	Item No. 24"	Item No. 30"	Item No. 36"	Item No. 48"
Black TPV No-Notch (Flat) Reversible Squeegee Blade	79005	79010	79013	79015	79020
Black TPV 1/8" Notch Reversible Squeegee Blade	79025	79030	79033	79035	79040
Black TPV 3/16" Notch Reversible Squeegee Blade	79045	79050	79053	79055	79060
Black TPV 1/4" Notch Reversible Squeegee Blade	79065	79070	79073	79075	79080
Black TPV 3/8" Notch Reversible Squeegee Blade	79085	79090	79093	79095	79100
Black TPV 1/2" Notch Reversible Squeegee Blade	79105	79110	79113	79115	79120
EPDM No-Notch (Flat) Reversible Squeegee Blade	79205	79210	79213	79215	79220
EPDM 1/8" Notch Reversible Squeegee Blade	79225	79230	79233	79235	79240
EPDM 3/16" Notch Reversible Squeegee Blade	79245	79250	79253	79255	79260
EPDM 1/4" Notch Reversible Squeegee Blade	79265	79270	79273	79275	79280
EPDM 3/8" Notch Reversible Squeegee Blade	79285	79290	79293	79295	79300
EPDM 1/2" Notch Reversible Squeegee Blade	79305	79310	79313	79315	79320
Red Rubber No-Notch (Flat) Reversible Squeegee Blade	79705	79710	79713	79715	79720
Red Rubber 1/8" Notch Reversible Squeegee Blade	79725	79730	79733	79735	79740
Red Rubber 3/16" Notch Reversible Squeegee Blade	79745	79750	79753	79755	79760
Red Rubber 1/4" Notch Reversible Squeegee Blade	79765	79770	79773	79775	79780
Red Rubber 3/8" Notch Reversible Squeegee Blade	79785	79790	79793	79795	79800
Red Rubber 1/2" Notch Reversible Squeegee Blade	79805	79810	79813	79815	79820

Application Squeegees

**Frame & blade combo -
you supply the handle**



Frame Width

Description	For Handle Options See Page 32		Frame Width	
	Item No. 16"	Item No. 24"	Item No. 16"	Item No. 24"
Application Squeegee Frame with No-Notch (Flat) Reversible EPDM Blade with THA*	78546	78554		
Application Squeegee Frame with No-Notch (Flat) Red Rubber Blade with THA*	78548	78556		
Application Squeegee Frame with 1/8" Notched Reversible EPDM Blade with THA*	78118	78128		
Application Squeegee Frame with 1/8" Notched Red Rubber Blade with THA*	-	78129		
Application Squeegee Frame with 3/16" Notched Reversible EPDM Blade with THA*	78116	78126		
Application Squeegee Frame with 3/16" Notched Red Rubber Blade with THA*	-	78323		
Application Squeegee Frame with 1/4" Notched Reversible EPDM Blade with THA*	78114	78124		
Application Squeegee Frame with 1/4" Notched Red Rubber Blade with THA*	-	78125		
Application Squeegee Frame with 1/2" Notched EPDM Blade, THA*	-	78122		

*THA=Threaded Handle Adapter

SPEEDSQUEEGEE HD™ - PREASSEMBLED SQUEEGEES

SPEEDSQUEEGEE HD™



PREASSEMBLED WITH THREADED HANDLE ADAPTER



GRAY EPDM

A favorite among epoxy flooring, deck coating and decorative concrete contractors. Gray EPDM has excellent chemical resistance, is moderately stiff and is non-marking. Has a heavy-duty polymer threaded handle adapter.

Item No.	Description
47174	SpeedSqueegee HD™, 24", Threaded Handle Adapter, Flat, Gray EPDM Blade
47175	SpeedSqueegee HD™, 24", Threaded Handle Adapter, 1/8" W x 1/16" D (8-12 mil), Gray EPDM Blade
47176	SpeedSqueegee HD™, 24", Threaded Handle Adapter, 3/16 W x 3/32" D (15-20 mil), Gray EPDM Blade
47177	SpeedSqueegee HD™, 24", Threaded Handle Adapter, 1/4" W x 1/8" D (20-28 mil), Gray EPDM Blade

RED RUBBER

The choice among epoxy flooring, deck coating, and decorative concrete contractors who prefer a softer blade. Red rubber provides excellent chemical resistance and is non-marking. Has a heavy-duty polymer threaded handle adapter.

Item No.	Description
47150	SpeedSqueegee HD™, 24", Threaded Handle Adapter, Flat, Red Rubber Blade
47151	SpeedSqueegee HD™, 24", Threaded Handle Adapter, 1/8" W x 1/16" D (8-12 mil), Red Rubber Blade
47152	SpeedSqueegee HD™, 24", Threaded Handle Adapter, 3/16 W x 3/32" D (15-20 mil), Red Rubber Blade
47153	SpeedSqueegee HD™, 24", Threaded Handle Adapter, 1/4" W x 1/8" D (20-28 mil), Red Rubber Blade

NOMINAL WET FILM THICKNESS CHART

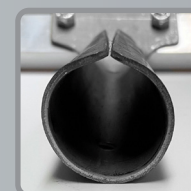
Description	Notch Width	Notch Depth	WFT (in Mils*)
1/8" V-Notch	1/8"	1/16"	8 - 12
3/16" V-Notch	3/16"	3/32"	15 - 20
1/4" V-Notch	1/4"	1/8"	20 - 28
3/8" V-Notch	3/8"	1/4"	30 - 45
1/2" V-Notch	1/2"	3/8"	46-55

What squeegee notch width / notch depth should I use to apply 10 mils of epoxy? At Midwest Rake®, the answer is **always** refer to our "Nominal Wet Film Thickness Chart" to determine the appropriate notch width / notch depth required for your job. Our squeegee blades have a unique design - shallower depth notches enable Midwest Rake® squeegees to stand out from the competition ensuring a consistent and tight range of wet film thickness delivery.

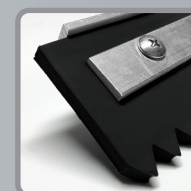
This chart conversions are not absolutes and are provided to help guide blade selection. Many factors can contribute to the actual wet film thickness produced; including: pressure exerted on the blade, porosity of the substrate (concrete) being coated, material being used and if and how the back-roll is completed. If you have any questions or would like to discuss the particulars of your project - please contact us at 844-SEYMOUR and we would be more than happy to provide guidance in the application squeegee selection process.



SPEEDSQUEEGEE HD™



TAPERED HANDLE ADAPTER



HEAVY-DUTY RUBBER BLADE

SMW #	DESCRIPTION	PACK QTY
47511-B	SpeedSqueegee HD™, 24", Tapered Adapter, Flat, Black Rubber	6
47511-B8	SpeedSqueegee HD™, 24", Tapered Adapter, 1/8" W x 1/16" D (8-12 Mil), Black Rubber	6
47511-B15	SpeedSqueegee HD™, 24", Tapered Adapter, 3/16" W x 3/32" D (15-20 Mil), Black Rubber	6
47511-B20	SpeedSqueegee HD™, 24", Tapered Adapter, 1/4" W x 1/8" D (20-28 Mil), Black Rubber	6
47511-B30	SpeedSqueegee HD™, 24", Tapered Adapter, 3/8" W x 1/4" D (30-45 Mil), Black Rubber	6
47511-B46	SpeedSqueegee HD™, 24", Tapered Adapter, 1/2" W x 3/8" D (46-55 Mil), Black Rubber	6
47511-B56	SpeedSqueegee HD™, 24", Tapered Adapter, (56-74 Mil), Black Rubber	6
47511-B75	SpeedSqueegee HD™, 24", Tapered Adapter, (75+ Mil), Black Rubber	6
47511-G	SpeedSqueegee HD™, 24", Tapered Adapter, Flat, Gray Rubber	6
47511-G8	SpeedSqueegee HD™, 24", Tapered Adapter, 1/8" W x 1/16" D (8-12 Mil), Gray Rubber	6
47511-G15	SpeedSqueegee HD™, 24", Tapered Adapter, 3/16" W x 3/32" D (15-20 Mil), Gray Rubber	6
47511-G20	SpeedSqueegee HD™, 24", Tapered Adapter, 1/4" W x 1/8" D (20-28 Mil), Gray Rubber	6
47511-G30	SpeedSqueegee HD™, 24", Tapered Adapter, 3/8" W x 1/4" D (30-45 Mil), Gray Rubber	6
47511-G46	SpeedSqueegee HD™, 24", Tapered Adapter, 1/2" W x 3/8" D (46-55 Mil), Gray Rubber	6
47511-G56	SpeedSqueegee HD™, 24", Tapered Adapter, (56-74 Mil), Gray Rubber	6
47511-G75	SpeedSqueegee HD™, 24", Tapered Adapter, (75+ Mil), Gray Rubber	6
47512-B	SpeedSqueegee HD™, 30", Tapered Adapter, Flat, Black Rubber	6
47512-B8	SpeedSqueegee HD™, 30", Tapered Adapter, 1/8" W x 1/16" D (8-12 Mil), Black Rubber	6
47512-B15	SpeedSqueegee HD™, 30", Tapered Adapter, 3/16" W x 3/32" D (15-20 Mil), Black Rubber	6
47512-B20	SpeedSqueegee HD™, 30", Tapered Adapter, 1/4" W x 1/8" D (20-28 Mil), Black Rubber	6
47512-B30	SpeedSqueegee HD™, 30", Tapered Adapter, 3/8" W x 1/4" D (30-45 Mil), Black Rubber	6
47512-B46	SpeedSqueegee HD™, 30", Tapered Adapter, 1/2" W x 3/8" D (46-55 Mil), Black Rubber	6
47512-B56	SpeedSqueegee HD™, 30", Tapered Adapter, (56-74 Mil), Black Rubber	6
47512-B75	SpeedSqueegee HD™, 30", Tapered Adapter, (75+ Mil), Black Rubber	6
47512-G	SpeedSqueegee HD™, 30", Tapered Adapter, Flat, Gray Rubber	6
47512-G8	SpeedSqueegee HD™, 30", Tapered Adapter, 1/8" W x 1/16" D (8-12 Mil), Gray Rubber	6
47512-G15	SpeedSqueegee HD™, 30", Tapered Adapter, 3/16" W x 3/32" D (15-20 Mil), Gray Rubber	6
47512-G20	SpeedSqueegee HD™, 30", Tapered Adapter, 1/4" W x 1/8" D (20-28 Mil), Gray Rubber	6
47512-G30	SpeedSqueegee HD™, 30", Tapered Adapter, 3/8" W x 1/4" D (30-45 Mil), Gray Rubber	6

IDEAL FOR HIGH VOLUME DECK COATING,
WATERPROOFING, AND URETHANE INSTALLATIONS
FIELD TESTED TO BE LIGHTER THAN THE COMPETITION

NEW

SPEEDSQUEEGEE HD™ - PREASSEMBLED SQUEEGEES



SMW #	DESCRIPTION	PACK QTY
47512-G46	SpeedSqueegee HD™, 30", Tapered Adapter, 1/2" W x 3/8" D (46-55 Mil), Gray Rubber	6
47512-G56	SpeedSqueegee HD™, 30", Tapered Adapter, (56-74 Mil), Gray Rubber	6
47512-G75	SpeedSqueegee HD™, 30", Tapered Adapter, (75+ Mil), Gray Rubber	6
47513-B	SpeedSqueegee HD™, 36", Tapered Adapter, Flat, Black Rubber	6
47513-B8	SpeedSqueegee HD™, 36", Tapered Adapter, 1/8" W x 1/16" D (8-12 Mil), Black Rubber	6
47513-B15	SpeedSqueegee HD™, 36", Tapered Adapter, 3/16" W x 3/32" D (15-20 Mil), Black Rubber	6
47513-B20	SpeedSqueegee HD™, 36", Tapered Adapter, 1/4" W x 1/8" D (20-28 Mil), Black Rubber	6
47513-B30	SpeedSqueegee HD™, 36", Tapered Adapter, 3/8" W x 1/4" D (30-45 Mil), Black Rubber	6
47513-B46	SpeedSqueegee HD™, 36", Tapered Adapter, 1/2" W x 3/8" D (46-55 Mil), Black Rubber	6
47513-B56	SpeedSqueegee HD™, 36", Tapered Adapter, (56-74 Mil), Black Rubber	6
47513-B75	SpeedSqueegee HD™, 36", Tapered Adapter, (75+ Mil), Black Rubber	6
47513-G	SpeedSqueegee HD™, 36", Tapered Adapter, Flat, Gray Rubber	6
47513-G8	SpeedSqueegee HD™, 36", Tapered Adapter, 1/8" W x 1/16" D (8-12 Mil), Gray Rubber	6
47513-G15	SpeedSqueegee HD™, 36", Tapered Adapter, 3/16" W x 3/32" D (15-20 Mil), Gray Rubber	6
47513-G20	SpeedSqueegee HD™, 36", Tapered Adapter, 1/4" W x 1/8" D (20-28 Mil), Gray Rubber	6
47513-G30	SpeedSqueegee HD™, 36", Tapered Adapter, 3/8" W x 1/4" D (30-45 Mil), Gray Rubber	6
47513-G46	SpeedSqueegee HD™, 36", Tapered Adapter, 1/2" W x 3/8" D (46-55 Mil), Gray Rubber	6
47513-G56	SpeedSqueegee HD™, 36", Tapered Adapter, (56-74 Mil), Gray Rubber	6
47513-G75	SpeedSqueegee HD™, 36", Tapered Adapter, (75+ Mil), Gray Rubber	6

IDEAL FOR HIGH VOLUME DECK COATING,
WATERPROOFING, AND URETHANE INSTALLATIONS
FIELD TESTED TO BE LIGHTER THAN THE COMPETITION

NOMINAL WET FILM THICKNESS CHART

Description	Notch Width	Notch Depth	WFT (in Mils*)
1/8" V-Notch	1/8"	1/16"	8 - 12
3/16" V-Notch	3/16"	3/32"	15 - 20
1/4" V-Notch	1/4"	1/8"	20 - 28
3/8" V-Notch	3/8"	1/4"	30 - 45
1/2" V-Notch	1/2"	3/8"	46 - 55
56-74 Mils V-Notch	~	~	56-74
75+ Mils V-Notch	~	~	75+

What squeegee notch width / notch depth should I use to apply 10 mils of epoxy? At Midwest Rake®, the answer is **always** refer to our "Nominal Wet Film Thickness Chart" to determine the appropriate notch width / notch depth required for your job. Our squeegee blades have a unique design - shallower depth notches enable Midwest Rake® squeegees to stand out from the competition ensuring a consistent and tight range of wet film thickness delivery.

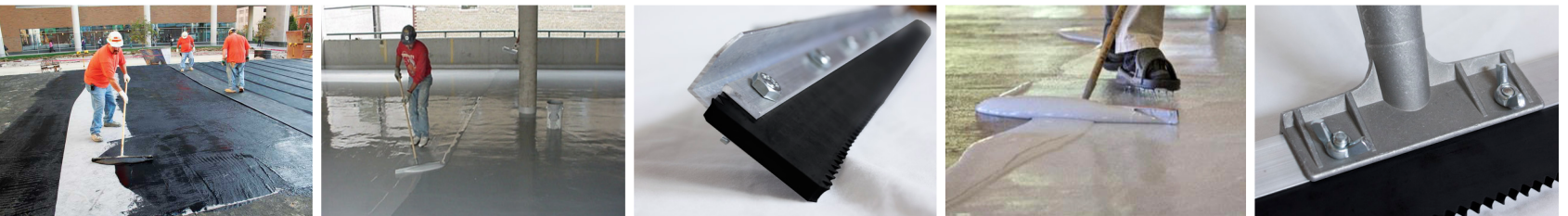
This chart conversions are not absolutes and are provided to help guide blade selection. Many factors can contribute to the actual wet film thickness produced; including: pressure exerted on the blade, porosity of the substrate (concrete) being coated, material being used and if and how the back-roll is completed. If you have any questions or would like to discuss the particulars of your project - please contact us at 844-SEYMOUR and we would be more than happy to provide guidance in the application squeegee selection process.

SPEEDSQUEEGEE HD™

HEAVY-DUTY REPLACEABLE BLADE APPLICATION SQUEEGEE



MIDWEST RAKE®



IDEAL FOR HIGH VOLUME DECK-COATING, WATERPROOFING AND URETHANE PRODUCT INSTALLATIONS

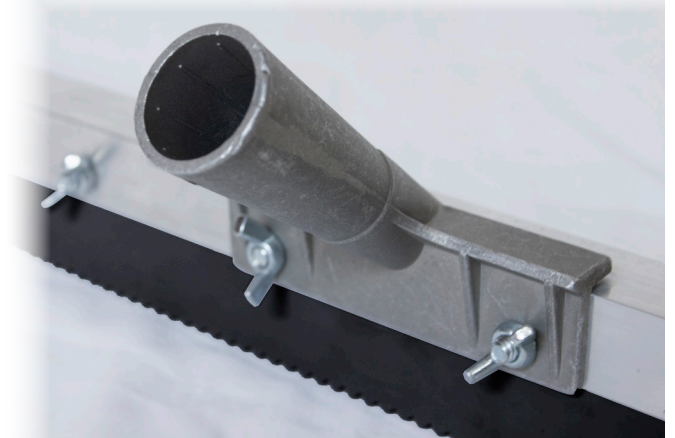
KEY PRODUCT FEATURES:

FRAMES:

- Heavy-duty aluminum frame **with tapered handle adapter**
- Frame kit includes: frame, clamp, hardware bag and tapered handle adapter
- Product is designed to be easily assembled without tools in just minutes

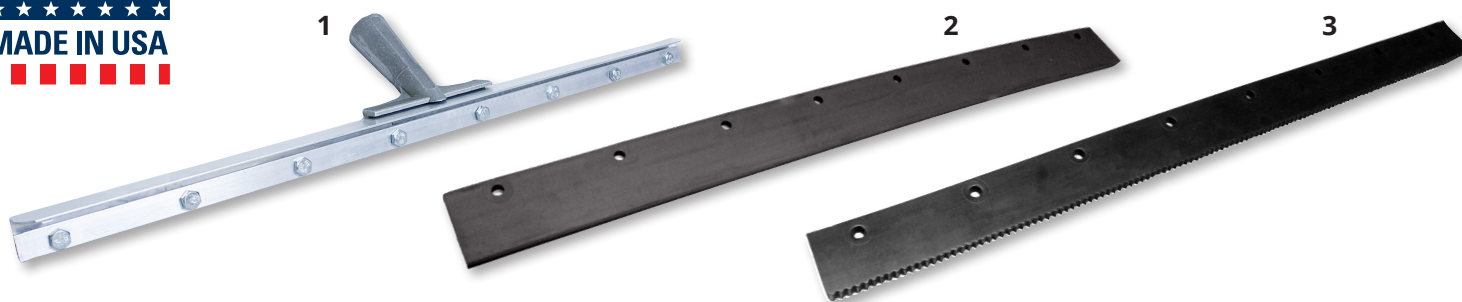
BLADES:

- Rubber blade is precut and prepunched allowing for easy assembly on the frame
- Blades are packaged and color-coded to identify both size of notch and approximate WFT delivered
- Blades offered in black neoprene
- **Frames & blades are sold separately**



NEW

SPEEDSQUEEGEE HD™ - UNASSEMBLED SQUEEGEE



#	SMW #	DESCRIPTION	PACK QTY
1	47540	SpeedSqueegee HD™ Frame, 30" Aluminum Head, Tapered Handle Adapter	6
2	47541	SpeedSqueegee HD™, 30", Flat, Black Neoprene Blade	6
3	47542	SpeedSqueegee HD™, 30", 1/8" W x 1/16" D (8-12 mil), Black Neoprene Blade	6
	47543	SpeedSqueegee HD™, 30", 3/16 W x 3/32" D (15-20 mil), Black Neoprene Blade	6
	47544	SpeedSqueegee HD™, 30", 1/4" W x 1/8" D (20-28 mil), Black Neoprene Blade	6
	47545	SpeedSqueegee HD™, 30", 3/8" W x 1/4" D (30-45 mil), Black Neoprene Blade	6
	47546	SpeedSqueegee HD™, 30", 1/2" W x 3/8" D (46-55 mil), Black Neoprene Blade	6
	47547	SpeedSqueegee HD™, 30" , (56-74 Mil), Black Neoprene Blade	6
	47548	SpeedSqueegee HD™, 30" , (75+ Mil), Black Neoprene Blade	6

What squeegee notch width / notch depth should I use to apply 10 mils of epoxy? At Midwest Rake®, the answer is **always** refer to our "Nominal Wet Film Thickness Chart" to determine the appropriate notch width / notch depth required for your job. Our squeegee blades have a unique design - shallower depth notches enable Midwest Rake® squeegees to stand out from the competition ensuring a consistent and tight range of wet film thickness delivery.

NOMINAL WET FILM THICKNESS CHART

Description	Notch Width	Notch Depth	WFT (in Mils*)
1/8" V-Notch	1/8"	1/16"	8 - 12
3/16" V-Notch	3/16"	3/32"	15 - 20
1/4" V-Notch	1/4"	1/8"	20 - 28
3/8" V-Notch	3/8"	1/4"	30 - 45
1/2" V-Notch	1/2"	3/8"	46-55
56-74 Mils V-Notch	~	~	56-74
75+ Mils V-Notch	~	~	75+



See Pages 13-15 for a large offering of PREASSEMBLED SpeedSqueegee HD™ tools with threaded handle and tapered adapters.

The chart conversions above are not absolutes and are provided to help guide blade selection. Many factors can contribute to the actual wet film thickness produced; including: pressure exerted on the blade, porosity of the substrate (concrete) being coated, material being used and if and how the back-roll is completed. If you have any questions or would like to discuss the particulars of your project - please contact us at 844-SEYMOUR and we would be more than happy to provide guidance in the application squeegee selection process.

GAUGE RAKES - CAM®

CAM® Gauge Rakes



U.S. Patent 5,606,763

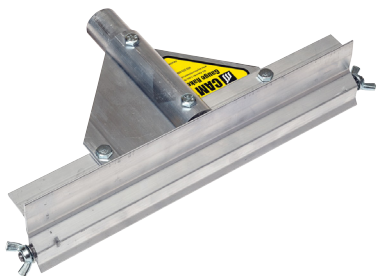


A patented "goof-proof" tool which applies materials at a precise, uniform depth. Apply decorative concrete "toppings," self leveling / high performance floor coating materials, and underlayments. CAM® depth settings range from 1/32" to 1-1/2". Includes an aluminum frame with either a threaded handle adapter or a powder-coated aluminum handle. Choose your frame size and handle option and then choose your CAM® set. Frames and sets are sold separately.

When one contact point wears down, you simply loosen the wing nut and rotate the CAM® to a fresh contact point. We use a "radial" edge design which maintains uniform coating thickness, even at varying handle angles and lengths.

CAM® GAUGE RAKE FRAMES AND CAM® SETS ARE SOLD SEPARATELY

- Head widths from 10" (hand-held) to 48". CAM® sets in depth settings from 1/32" to 1-1/2".
- The CAM® Gauge Rake is available with a milled threaded handle adapter or a 66" powder-coated aluminum handle. The 10" CAM® Rake is used for small areas and counter tops and has its own fixed handle with grip.



Midwest Rake® CAM® Gauge Rake

- Threaded Handle Adapter (Frame Only)
- CAM®s Sold Separately

12"	24"	36"	48"
57030	57000	57010	57020



Midwest Rake® CAM® Gauge Rake

- 66" Powder-Coated Aluminum Handle (Frame Only)
- CAM®s Sold Separately

12"	24"	36"	48"
57031	57001	57011	57021



Midwest Rake® CAM® Gauge Rake

- 82" Powder-Coated Aluminum Handle (Frame Only)
- CAM®s Sold Separately

12"	24"	36"	48"
57032	57002	57012	57022

57044 Midwest Rake® CAM® Gauge Rake Frame

- 10" Hand-Held Handle w/Grip
- CAM®s Sold Separately

Helpful Hint...

In many applications, gauge rakes can do the work in half the time it takes to use a squeegee... and with greater precision.



CAM® Gauge Rake CAM® Sets

(Two CAM®s Per Set)



1/32"	1/24"	1/16"	1/8"	3/16"	1/4"	5/16"	3/8"	1/2"
57078	57079	57081	57082	57083	57084	57085	57086	57088
Size A	Size B	Size 1	Size 2	Size 3	Size 4	Size 5	Size 6	Size 8

Not sure what depth you are going to need on your project? Use the Combo CAM® set.

This CAM® set has 5 separate size settings; 1 each of 1/16", 1/8", 3/16", 1/4" and 5/16". Sold separately from frame.

Larger CAM® Sets

Item No.	Description
57090	5/8" CAM® Set (2 Each), 3 Settings, Size 10
57096	1" CAM® Set (2 Each), 3 Settings, Size 16
57104	1-1/2" CAM® Set (2 Each), 2 Settings, Size 24



57080

CAM® Sets Are Also Available in 3-Packs

Item No.	Description
57180	CAM® 3-Pack – 1 Set (2 Each), Size 1 (57081), Size 2 (57082) and Size 4 (57084)
57181	CAM® 3-Pack – 1 Set (2 Each), Size 2 (57082), Size 4 (57084) and Size 6 (57086)

Small CAM® Sets (Two CAM®s Per Set)

Looking to apply coatings and slurries at greater than 30 mils? Our smaller CAM® Sets are ideal for Wet Film Thickness from 30 mils to 125 mils.

Customize Your Own CAM® Gauge Rake

or choose from a frame & blade combo (you supply the handle)

Now you can order the exact tool you use most. Supplied with a 24" wide frame and 1 CAM® set. Four different sizes of CAM® sets are available. Simply attach a handle and you have a complete tool. Replacement CAM® sets are available.

CAM® Size	Description
Size A	1/32" = Approx 30 mils
Size B	1/24" = Approx 42 mils
Size 1	1/16" = Approx 62 mils
Size 2	1/8" = Approx 125 mils



Item No.	Description
57201	24" CAM® Gauge Rake with Size 1 (1/16") CAM® Set (2 Each), THA*
57202	24" CAM® Gauge Rake with Size 2 (1/8") CAM® Set (2 Each), THA*
57203	24" CAM® Gauge Rake with Size 3 (3/16") CAM® Set (2 Each), THA*
57204	24" CAM® Gauge Rake with Size 4 (1/4") CAM® Set (2 Each), THA*
57206	24" CAM® Gauge Rake with Size 6 (3/8") CAM® Set (2 Each), THA*

*Threaded Handle Adapter

Key Product Feature

We use a "radial" edge CAM® design which maintains uniform coating thickness, even at varying handle angles and lengths.



GAUGE RAKES - WIRE & SLED-STYLES

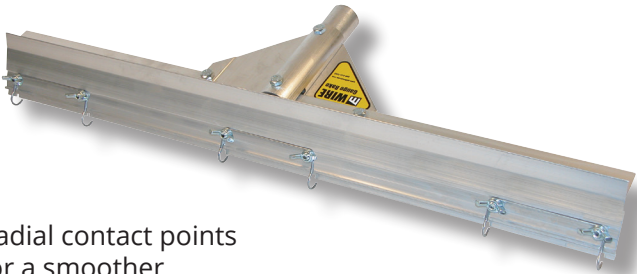
Wire Gauge Rakes



58624



Radial contact points
for a smoother
push / pull action



58609

Applies self-leveling floor coatings and lower viscosity materials. Far superior to pin-type gauge rakes on the market. The strong spring-steel wires are formed in a "radial" or loop fashion, eliminating chatter and vibration common with pin-type gauge rakes. Radial contact points will maintain even at varying handle angles and lengths. The adjustable aluminum gate or bar can be set to any desired thickness from 0" to 5/8". Replacement wires are available.

Description	Frame Width		
	Item No. 14"	Item No. 24"	Item No. 36"
Wire Gauge Rake with Threaded Handle Adapter	58714	58609	58734
Wire Gauge Rake with 66" Powder-Coated Aluminum Handle	-	58624	58736
Wire Gauge Rake with 82" Powder-Coated Aluminum Handle	-	58824	58738

Description	Item No.		
	68611	68611	-
Replacement Wire Set (Set of 3 Wires)	68611	68611	-
Replacement Wire Set (Set of 4 Wires for 36" Width)	68616	-	68616

Sled-Style Gauge Rakes

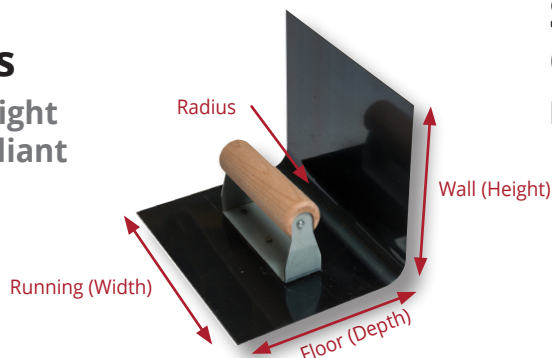
These self-adjusting gauge rakes have been used by contractors for many years. Although not as precise as our other gauge rakes, they are value priced and will allow you to achieve a reasonably level depth when installing cementitious materials. They also allow you to easily move over rough surfaces. Styles and colors may vary, but the "sled-style" self-adjusting feature of this gauge rake will be a standard characteristic in this category. Our handle adapter is threaded to provide a secure connection.



Item No.	Description
58420	24" Sled-Style Gauge Rake
58425	36" Sled-Style Gauge Rake
SA30034	Replacement Sleds - Set of 2

Heavy-Duty Cove Trowels

6" and 8" Wall Height Regulation Compliant



Item No.	Description
47481	3/4" Radius, 6" Wall (H) x 5-3/4" Floor (D) x 7-1/2" Running (W)
47482	3/4" Radius, 8" Wall (H) x 5-3/4" Floor (D) x 7-1/2" Running (W)
47485	1" Radius, 6" Wall (H) x 5-3/4" Floor (D) x 7-1/2" Running (W)
47486	1" Radius, 8" Wall (H) x 5-3/4" Floor (D) x 7-1/2" Running (W)

Standard Cove Trowels

High Carbon Blue Steel



Item No.	Description
47414	Heavy-Duty 1" Radius, 3.5" H x 5-3/4" D x 7-1/2" W
47409	Heavy-Duty 3/4" Radius, 3.5" H x 5-3/4" D x 7-1/2" W
47411	Economy Regular 1" Radius, 3" H x 4" D x 6" W
47412	Economy Regular 1" Radius, 3" H x 6" D x 6" W

Tempered, ground and polished high-carbon spring steel trowels. Blades are fastened with hardened steel ground rivets. Wooden handles for better gripping power. Selected by manufacturers' "technical specialists" for decorative concrete and floor coating applications.



Rounded End Trowels



47465	4" x 16"
47466	4" x 18"
47475	3" x 12"
47477	3" x 16"

Notched Trowels

11" x 4-1/2" Overall



47406	3/16" V-Notch
47403	1/4" V-Notch
47402	1/2" V-Notch

"Spring Form" Trowels

Shorter Rib,
More Flexibility



47470	Square Edge, 5" x 16"
47468	Rounded Edge, 5" x 16"

Epoxy Mortar Trowels



47460	3" x 12"
47461	3" x 16"

Finishing Trowels



47404	4" x 12"
47405	4" x 16"

Flexible Radius Trowel

This highly versatile, solvent-resistant rubber hand tool with flexible wings is ideal for the application of higher viscosity waterproofing, floor coating and sealing materials. Also effective along floor edges, for crack and patch filling on floors, and for the creation of a rounded radius along straight and radial edges when applying many different cementitious materials. Use with a threaded handle (see page 32).

The wing width is 6-1/2" and the length is 9-1/2". A 1-1/8" diameter tapered handle may be used with this tool (see page 32).



Item No.	Description
46010	Flexible Radius Trowel



SMOOTHERS & SPREADERS

Flexible Blade Smoother

This flexible 24" x 5" rounded corner steel blade is bent and angled to maximize blade contact with a range of surface coating materials. This smoothing tool can also serve as a spreading tool and even a surface preparation tool. It is most often used when troweling and / or smoothing overlay / underlay material (toppings) of a cementitious composition. The blade is contained in a durable aluminum frame with our superior aluminum gusset bracing system. This tool is available with a threaded handle adapter or with a 66" powder-coated aluminum handle.

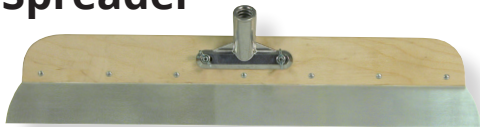
Rounded Corner

Item No.	Description	Blade Size
78906	With Threaded Handle Adapter	24"
78907	With 66" Powder-Coated Aluminum Handle	24"

Square Corner

Item No.	Description	Blade Size
78902	With Threaded Handle Adapter	24"
78903	With 66" Powder-Coated Aluminum Handle	24"

Smoother/Spreader



Item No.	Description
78930	Wood / Steel Smoother with 22" Frame and 23-1/2" x 2" Heat-Treated Fan-Shaped Blade, THA*

*Threaded Handle Adapter



EXCLUSIVE



MADE IN USA

NEW THE ULTIMATE TROWEL™

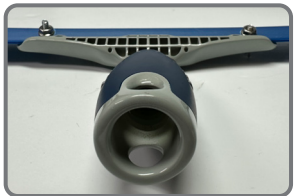


MADE IN USA

- BLADE SHEATH PROVIDED TO PROTECT THE BLADE & EXTEND LIFE OF TOOL
- COMFORT HAND GRIP WITH THREADED HANDLE ADAPTER

MATERIAL SCIENCE PROVIDES A MORE DURABLE BLADE FOR LONGER TOOL LIFE

This style of trowel has been a contractor favorite to smooth the surface of applied cementitious overlays, particularly overlays of a more fluid consistency. A very effective finishing tool capable of creating a flawless surface. Blade has a slipcoat layer that provides an easy to clean surface.



Item No.	Description
47420-12	12" Ultimate Trowel™ with Threaded Handle Adapter
47420-18	18" Ultimate Trowel™ with Threaded Handle Adapter
47420-22	22" Ultimate Trowel™ with Threaded Handle Adapter

Item No.	Description
47420-24	24" Ultimate Trowel™ with Threaded Handle Adapter
47420-26	26" Ultimate Trowel™ with Threaded Handle Adapter

MIDWEST RAKE® ASSURANCE™

GUARANTEED QUALITY AND CONSISTENCY

GUARANTEED QUALITY & CONSISTENCY FOR THE EPOXY FLOORING CONTRACTOR

Assurance™ covers are designed to meet the needs of flooring contractors. They are extremely shed-resistant and provide a consistent quality you can depend on.

KEY FEATURES OF WOVEN:

- Premium quality high density fabric
- Solvent resistant phenolic core
- Designed for use with epoxies and urethanes of all types

KEY FEATURES OF LOOPED:

- Ideal for applying cement urethanes
- Often used with aggregated coatings
- Great for spreading and back-rolling



Item No.	Description
48202	9" Assurance™ Woven Shed-Resistant Roller Cover - 1/4" Nap
48203	9" Assurance™ Woven Shed-Resistant Roller Cover - 3/8" Nap
48204	9" Assurance™ Woven Shed-Resistant Roller Cover - 1/2" Nap
48208	18" Assurance™ Woven Shed-Resistant Roller Cover - 1/4" Nap
48209	18" Assurance™ Woven Shed Resistant Roller Cover - 3/8" Nap
48210	18" Assurance™ Woven Shed Resistant Roller Cover - 1/2" Nap
48015	9" Assurance™ Looped Polymer Roller Cover
48018	18" Assurance™ Looped Polymer Roller Cover

All 18" covers fit 1/4" axles and come with 1/4" (white) end caps. All 24" & 36" covers fit 3/8" axles and come with black 3/8" end caps.

See Roller Frame options on page 26.

Extra-Long Pro-Grade Roller Covers

These roller covers are available in a shed-resistant woven fabric in widths of 24" and 36", with various nap lengths.

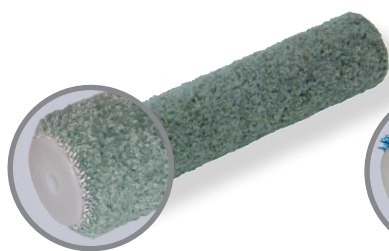
Description	Roller Width	Nap Length 3/8"	Nap Length 1/2"
Pro-Grade Woven Shed-Resistant Roller Cover	24"	48040	48042
Pro-Grade Woven Shed-Resistant Roller Cover	36"	48050	48052



Complete large flooring projects faster! See for yourself why a simple change to a 24" roller from the traditional 18" roller used in flooring can save significant time and labor.

ROLLER COVERS - SPECIALTY

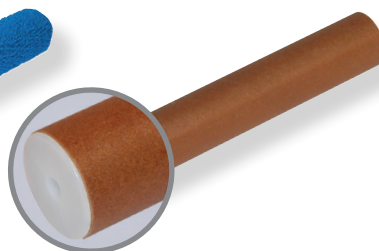
Specialty Roller Covers



These Grey Carpet Nap Roller Covers are for the application of adhesives and coatings.



These Looped Polymer Roller Covers are most often used to "back-roll" applied coatings.



Our Phenolic Roller Covers are solvent-resistant and are used for the spreading and leveling of applied epoxies and mastics, anti-slip floor coverings and heavier coatings.



Pro Tiz™ Roller Covers are 3/16" high capacity, lint-free foam ideal for counter tops and have a phenolic core.



Item No. 9" No End Caps	Item No. 18" with 1/4" End Caps	Description
48015	48018	Looped Polymer Roller Cover
48025	48019	Phenolic Roller Cover
48014	48017	Grey Carpet Nap Roller Cover
48416	-	9" Pro Tiz™ Roller Cover - 3/16" Foam (R265-9)

Wooster® Roller Covers Not all fibers are created equal. With roller covers, like any textile item, the quality level of the chosen fiber ends up dictating the richness of the fabric being produced. Wooster® works closely with their fabric suppliers to choose and then modify fibers to ensure that they hold and release coatings better than competitive covers.

*See page 27 for more info on the Seymour Midwest® & Wooster® relationship.



Item No. Description

48414	9" Microplush™ Roller Cover - 5/16" Nap (R235-9)
48415	18" Microplush™ Roller Cover - 5/16" Nap (R235-18)



Item No. Description

48430	9" Epoxy Glide™ Roller Cover - 1/4" Nap (R232-9)
48431	18" Epoxy Glide™ Roller Cover - 1/4" Nap, with 1/4" End Caps (R232-18)



Item No. Description

48421	9" Pro/Doo-Z® Roller Cover - 3/16" Nap (RR641-9)
48422	18" Pro/Doo-Z® Roller Cover - 3/16" Nap with 1/4" End Caps (RR641-18)
48423	9" Pro/Doo-Z® Roller Cover - 3/8" Nap (RR642-9)
48424	18" Pro/Doo-Z® Roller Cover - 3/8" Nap with 1/4" End Caps (RR642-18)
48426	9" Pro/Doo-Z® Roller Cover - 1/2" Nap (RR643-9)
48428	18" Pro/Doo-Z® Roller Cover - 1/2" Nap with 1/4" End Caps (RR643-18)



Item No. Description

48419	9" Mohair Blend™ Roller Cover - 1/4" Nap (R207-9)
48420	18" Mohair Blend™ Roller Cover - 1/4" Nap, with 1/4" End Caps (R207-18)

ROLLER COVERS, ROLLERS & BRUSHES



Item No. Description

48441	9" Painters Solution™ Roller Cover - 3/16" Nap (R575-9)
48443	9" Painters Solution™ Roller Cover - 3/8" Nap (R576-9)
48444	9" Painters Solution™ Roller Cover - 1/2" Nap (R577-9)
48446	9" Painters Solution™ Roller Cover - 3/4" Nap (R578-9)
48447	18" Painters Solution™ Roller Cover - 3/16" Nap, with 1/4" End Caps (R575-18)
48449	18" Painters Solution™ Roller Cover - 3/8" Nap, with 1/4" End Caps (R576-18)
48450	18" Painters Solution™ Roller Cover - 1/2" Nap, with 1/4" End Caps (R577-18)
48451	18" Painters Solution™ Roller Cover - 3/4" Nap, with 1/4" End Caps (R578-18)

Item No. Description

48485	9" American Contractor™ Knit Cover - 3/8" Nap (R562-9)
48486	9" American Contractor™ Knit Cover - 1/2" Nap (R563-9)
48487	9" American Contractor™ Knit Cover - 3/4" Nap (R564-9)
48488	9" American Contractor™ Knit Cover - 1-1/4" Nap (R565-9)
48481	18" American Contractor™ Knit Cover - 3/8" Nap, with 1/4" End Caps (R362-18)
48482	18" American Contractor™ Knit Cover - 1/2" Nap, with 1/4" End Caps (R363-18)
48483	18" American Contractor™ Knit Cover - 3/4" Nap, with 1/4" End Caps (R364-18)
48520	9" Economy Knit Cover - 3/8" Nap (R259-9)
48521	9" Economy Knit Cover - 1/2" Nap (R260-9)
48522	9" Economy Knit Cover - 3/4" Nap (R261-9)

4" Rollers and Frames

Item No. Description

48499	4" Painters Solution™ Roller Cover - 3/8" Nap (R576-4)
48404	4" Acme™ Heavy-Duty Frame (F0010-4)
48490	4" Super Doo-Z® 1/2" (R204-4)
48491	4" Super Doo-Z® 3/8" (R205-4)
48475	4" Super/Fab® Knit 3/4" (R241-4)



48490



48491



48475



48404

Painter's Choice Roller Kit

Item No. Description

48492	9" Painter's Choice Roller Kit (R975)
-------	---------------------------------------



48411

Mini-Koter® and Frames

Item No. Description

48407	Mini-Koter® Frame, 12" Length (R012)
48408	Mini-Koter® Frame, 19" Length (R011)
48411	Sherlock® Mini Pro Frame (Long Handle) (RR014)
48413	4-1/2" Jumbo-Koter® Pro/Doo-Z® (RR302)
48476	6" Mini-Koter® Woven 3/8" 2pk (R222-6)
48477	6" Mini-Koter® Woven 3/8" 10pk (R125-6)

Item No. Description

48478	6" Mini-Koter® Knit 1/2" 2pk (R231-6)
48479	6" Mini-Koter® Knit 1/2" 10pk (R151-6)
48473	4" Mini-Koter® Woven 3/8" 2pk (R222-4)
48474	4" Mini-Koter® Woven 3/8" 10pk (R125-4)
48452	4" Mini-Koter® Knit 1/2" 2pk (R231-4)
48453	4" Mini-Koter® Knit 1/2" 10pk (R151-4)



48476



48407



Chip Brushes

Chip brushes are ideal for flooring and protective and marine contractors who require a disposable and inexpensive brush to trim in around corners and edges.

48131

48133

48142

48459

48461

48463

48563



Item No. Description

48131	2" White Bristle Chip Brush
48132	2-1/2" White Bristle Chip Brush
48133	3" White Bristle Chip Brush
48134	4" White Bristle Chip Brush
48142	2-1/2" White Bristle Double Thick Chip Brush
48143	3" White Bristle Double Thick Chip Brush
48144	4" White Bristle Double Thick Chip Brush
48459	1" Solvent-Proof Chip Brush (1147-1)

Item No. Description

48460	1-1/2" Solvent-Proof Chip Brush (1147-1.5)
48461	2" Solvent-Proof Chip Brush (1147-2)
48462	2-1/2" Solvent-Proof Chip Brush (1147-2.5)
48463	3" Solvent-Proof Chip Brush (1147-3)
48464	4" Solvent-Proof Chip Brush (1147-4)
48561	2" Factory Sale Gray Bristle Brush (Z1101-2)
48563	3" Factory Sale Gray Bristle Brush (Z1101-3)
48564	4" Factory Sale Gray Bristle Brush (Z1101-4)

SP20207

SP20217

Sherlock® Extension Poles

Description

SP20207	Sherlock® 2' - 4' Extension Pole (R054)
SP20208	Sherlock® 4' - 8' Extension Pole (R055)
SP20209	Sherlock® 6' - 12' Extension Pole (R056)
SP20217	Sherlock GT® Convertible™ 2'-4' Pole (R090)
SP20218	Sherlock GT® Convertible™ 4'-8' Pole (R091)
SP20219	Sherlock GT® Convertible™ 6'-12' Pole (R092)

NEW

ROLLERS - MISC

Roller Gauge End Caps

The thick film roller gauge works for urethane cement, cement overlays, epoxies, anti-skids, and vapor barriers. Spread, gauge, and back roll; snaps on ends of roller in seconds; precise gauging, no guessing, no waste.



Item No.	Description
48182	Roller Gauge End Caps, Low Mil 6-pk, Yellow, Approx 4 mils (R082)
48183	Roller Gauge End Caps, Med Mil 6-pk, Red, Approx 12 mils (R083)
48187	Roller Gauge End Caps, Med/Thick Mil 6-pk, Green, Approx 16 mils (R080) NEW
48184	Roller Gauge End Caps, High Mil 6-pk, Blue, Approx 22 mils (R084)
48185	Roller Gauge End Caps, Thick Film 6-pk, Gray, 1/2" Depth (R078) - PACK QTY 100 NEW
48186	Roller Gauge End Caps, Thick Film 6-pk, Black, 1/4" Depth (R079) - PACK QTY 100 NEW

End Caps



Item No.	Description
SA30005	1/4" End Caps (Set of 2)
SA30042	1/4" End Caps (Box of 24)
SA30045	3/8" End Caps (Set of 2)
SA30048	3/8" End Caps (Bag of 24)



Roller Frames

The **48400** has a quick release spring that prevents roller slippage, smooth bearings for reliable applications, a polypropylene grip and a threaded handle adapter. It is one of the best universal roller frames on the market. The **48403** is a traditional "paint roller" style frame and the handle contains a threaded handle adapter. The **48410** adjusts to hold all roller covers from 9" to 18" wide. It has a rigid and durable steel frame with a threaded handle adapter, yet weighs less than one pound. The **48418** is a lightweight, yet the durable polypropylene 18" non-adjustable frame can accommodate any of the 18" roller covers we offer. This frame offers a threaded handle adapter and the fiber-glass-reinforced nylon legs are replaceable.

Item No.	Description
48400	9" Wooster® Sherlock® Frame (R017)
48403	9" Wooster® Magikage® Ninety Frame (R016)
48540	9" Wooster® Acme™ Heavy-Duty Roller Frame (F0010)
48410	Wooster® Sherlock Wide Boy™ 18" Frame (BR036)
48418	Wooster® Big Ben® 18" Frame (BR045)
SA30006	Replacement Nylon Legs for 48418 - Set of 2 (R085)



Complete large flooring projects faster! See for yourself why a simple change to a 24" roller from the traditional 18" roller used in flooring can save significant time and labor.

Heavy-Duty Fixed Width Aluminum Frames **EXCLUSIVE**

These are the most durable frames on the market. They are available in widths of 9", 18", 24" and 36" and can be used with any of our roller covers and nylon and metal-tined rollers. The frames can be ordered with either a threaded handle adapter or with a fixed handle assembly. These heavy-duty solid aluminum frames are solvent-resistant and can be easily cleaned after each use. Special 3/8" post hole end caps are available for use with these exclusive frames when using 9" - 36" roller covers and spiked rollers. These polypropylene end caps are used to adapt the frames to any standard 1-1/2" roller. They are sold in quantities of 1 pair or a bag of 24 (see top of page).

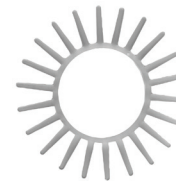


For Handle Options See Page 32

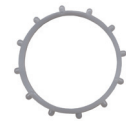
Description	Item No. 9"	Item No. 18"	Item No. 24"	Item No. 36"
Heavy-Duty Aluminum Frame with Threaded Handle Adapter	60108	60110	60113	60115
Heavy-Duty Aluminum Frame with 66" Powder-Coated Aluminum Handle	60109	60112	60114	60116

Blunt Spiked & Stub Rollers

We make a number of specialty tools featuring these hybrid spikes. Unlike our sharp-tipped spiked rollers, used to remove trapped bubbles from freshly applied floor coatings, these roller covers are actually used as application tools. They are often used to force and compress aggregate materials into a variety of overlayments, or create a special surface finish. We can custom make a variety of tools using the **"blunt"** and **"stub"** spikes. Because of the hollow aluminum core, these rollers can be weighted.



Blunt Spikes
13/16" spikes
(22 spikes per ring)



Stubs
1/8" stubs
(12 stubs per ring)

Roller Width

Description	Item No. 9"	Item No. 18"	Item No. 24"	Item No. 36"
Blunt Spiked Roller on Radial Roller Frame	59108	-	-	-
Blunt Spiked Roller on Heavy-Duty Aluminum Frame with THA*	59709	59718	59724	59736
Blunt Spiked Roller on Heavy-Duty Aluminum Frame with 66" PCAH**	59809	59818	59824	59836
Replacement Blunt Spiked Roller	-	SA10014	SA10015	SA10016
Stub Roller on Radial Roller Frame	59758	-	-	-
Stub Roller on Heavy-Duty Aluminum Frame with THA*	59759	59768	59774	-
Replacement Stub Roller	SA10072	SA10073	SA10074	-

*THA=Threaded Handle Adapter **Powder-Coated Aluminum Handle

1-1/2" & 3" Small Spiked Rollers

These spiked rollers are vital in ensuring proper floor coating material adhesion. They are designed to be used on freshly applied floor coatings for the purpose of releasing trapped gas as well as to assist in the leveling process of several varieties of floor coatings. These rollers are easy to clean, allowing for repeated use. The applicator should also wear spiked shoes while using a spiked roller (see pages 4-6).

We manufacture our spikes and end caps out of solvent-resistant High-Density (HD) and Ultra-High Molecular Weight (UHMW) Polyethylene, respectively, for easier cleanup and extended wear. Spikes are available in 7/16", 9/16" and 13/16" lengths. We have 1-1/2" and 3" widths on special frames for very tight areas. The 1-1/2" and 3" rollers come on special handled frames.



Item No.	Description
59001	1-1/2" with 7/16" Spikes
59003	3" with 7/16" Spikes
59403	3" with 9/16" Spikes
59103	3" with 13/16" Spikes

GREAT FOR WORKING MATERIAL NEAR CORNERS AND EDGES



MIDWEST RAKE®

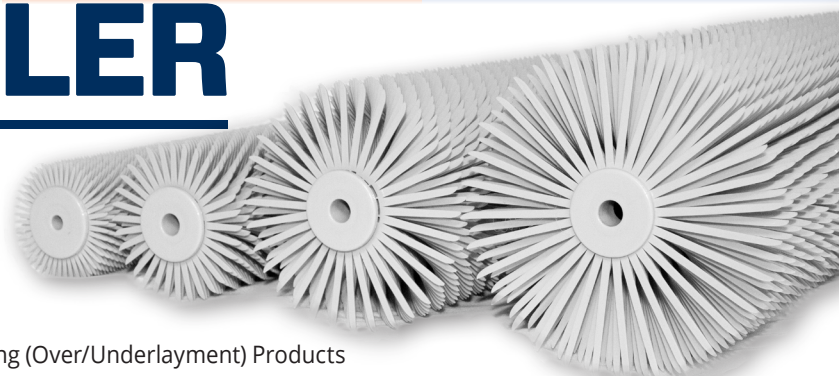
Looking for a traditional painting tool such as a brush, roller, frame or specialty tool that you don't see in our catalog? We now can give you access to thousands of **Wooster®** items as part of our expanded relationship.

- Single source all of your coatings tools, supplies and applicators
- New customized joint merchandising solutions and point of sale material available
- Customized programs tailored to meet your needs
- Local sales support

SPIKED ROLLERS - NYLON-TINED

SPIKED ROLLER

- 4 Tine Lengths Available: 1/2", 13/16", 1-1/2" & 2"
- Abrasion-Resistant Nylon Tines Provide Superior Tool Life
- 3/8" End-Caps Allow Use with Midwest Rake® 9" Radial Frame, Medium-Duty Frame or Heavy-Duty Aluminum Frame
- Designed for Maximum Effectiveness in Releasing Entrapped Air and Promoting Self-Leveling of Coatings
- Engineered to Improve the Application Characteristics of Resurfacing (Over/Underlayment) Products



RADIAL FRAME



59010 9" Radial Frame

REPLACEMENT PARTS

59019 Hardware Bag for 9" Radial Frame (Washers / Spring Clip)

Choose Your Frame:

MEDIUM-DUTY FRAME



59030	18" Medium-Duty Aluminum Frame
59050	24" Medium-Duty Aluminum Frame
59070	36" Medium-Duty Aluminum Frame

REPLACEMENT PARTS

59089	Hardware Bag for 18" & 24" & 36" Medium-Duty Aluminum Frames
59091	Threaded Handle Adapter & Screw for Medium-Duty Frame

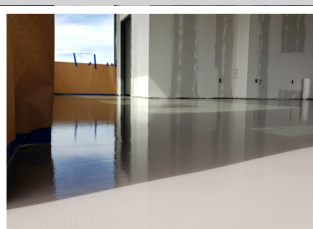
HEAVY-DUTY FRAME



60108	9" Heavy-Duty Aluminum Frame with Threaded Handle Adapter
60109	9" Heavy-Duty Aluminum Frame with 66" Powder Coated Aluminum Handle
60110	18" Heavy-Duty Aluminum Frame with Threaded Handle Adapter
60112	18" Heavy-Duty Aluminum Frame with 66" Powder Coated Aluminum Handle
60113	24" Heavy-Duty Aluminum Frame with Threaded Handle Adapter
60114	24" Heavy-Duty Aluminum Frame with 66" Powder Coated Aluminum Handle
60115	36" Heavy-Duty Aluminum Frame with Threaded Handle Adapter
60116	36" Heavy-Duty Aluminum Frame with 66" Powder Coated Aluminum Handle

REPLACEMENT PARTS

SA30035	Hardware Bag, Axles for Heavy-Duty Frame
SA30010	THA Kit (Threaded Handle Adapter, Gusset Braces & Hardware)



- All frames have a threaded handle adapter.
- Both nylon tined & metal-tined rollers come with 3/8" end-caps allowing them to fit any of the frames listed above.
- **2" NYLON SPIKED ROLLERS CAN ONLY BE USED WITH THE 9" RADIAL FRAME OR THE MEDIUM-DUTY FRAMES.**

Choose Your Roller:

Item No. Description

1/2" SUPER SHARP (44 TINES) 	59011	9" Spiked Roller, 1/2" Supersharptines
	59031	18" Spiked Roller, 1/2" Supersharptines
	59051	24" Spiked Roller, 1/2" Supersharptines
	59071	36" Spiked Roller, 1/2" Supersharptines

Ideal for Resinous Coatings (Epoxy & Urethane)

13/16" SUPER SHARP (32 TINES) 	59012	9" Spiked Roller, 13/16" Supersharptines
	59032	18" Spiked Roller, 13/16" Supersharptines
	59052	24" Spiked Roller, 13/16" Supersharptines
	59072	36" Spiked Roller, 13/16" Supersharptines

Ideal for Cementitious and Gypsum Resurfacing Materials

Item No. Description

1-1/2" SUPER SHARP (32 TINES) 	59013	9" Spiked Roller, 1-1/2" Supersharptines
	59033	18" Spiked Roller, 1-1/2" Supersharptines
	59053	24" Spiked Roller, 1-1/2" Supersharptines
	59073	36" Spiked Roller, 1-1/2" Supersharptines

Ideal for Cementitious and Gypsum Resurfacing Materials

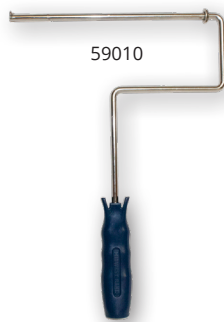
2" SUPER SHARP (32 TINES) 	59014	9" Spiked Roller, 2" Supersharptines
	59034	18" Spiked Roller, 2" Supersharptines
	59054	24" Spiked Roller, 2" Supersharptines
	59074	36" Spiked Roller, 2" Supersharptines

Ideal for Cementitious and Gypsum Resurfacing Materials
2" Nylon Spiked Rollers Can Only Be Used with the 9" Radial Frame or the Medium-Duty Frames

SPIKED ROLLER

- 2 Tine Lengths Available: 1/2" & 1-1/4" Nominal • 1-1/2" Standard Size Core • Dense Configuration of Tin-Plated Steel Tines
- Designed for Maximum Effectiveness in Releasing Entrapped Air & Promoting Self-Leveling of Coatings
- Engineered to Improve the Application Characteristics of Resurfacing (Over/Underlayment) Products
- 3/8" End-Caps Allow Use with Midwest Rake® 9" Radial Frame, Medium-Duty Frame or Heavy-Duty Aluminum Frame

RADIAL FRAME



59010 9" Radial Frame

REPLACEMENT PARTS

59019 Hardware Bag for 9" Radial Frame (Washers / Spring Clip)

Choose Your Frame:

MEDIUM-DUTY FRAME



59030	18" Medium-Duty Aluminum Frame
59050	24" Medium-Duty Aluminum Frame
59070	36" Medium-Duty Aluminum Frame

REPLACEMENT PARTS

59089	Hardware Bag for 18" & 24" & 36" Medium-Duty Aluminum Frames
59091	Threaded Handle Adapter & Screw for Medium-Duty Frame

HEAVY-DUTY FRAME



60108	9" Heavy-Duty Aluminum Frame with Threaded Handle Adapter
60109	9" Heavy-Duty Aluminum Frame with 66" Powder Coated Aluminum Handle
60110	18" Heavy-Duty Aluminum Frame with Threaded Handle Adapter
60112	18" Heavy-Duty Aluminum Frame with 66" Powder Coated Aluminum Handle
60113	24" Heavy-Duty Aluminum Frame with Threaded Handle Adapter
60114	24" Heavy-Duty Aluminum Frame with 66" Powder Coated Aluminum Handle
60115	36" Heavy-Duty Aluminum Frame with Threaded Handle Adapter
60116	36" Heavy-Duty Aluminum Frame with 66" Powder Coated Aluminum Handle

REPLACEMENT PARTS

SA30035	Hardware Bag, Axles for Heavy-Duty Frame
SA30010	THA Kit (Threaded Handle Adapter, Gusset Braces & Hardware)

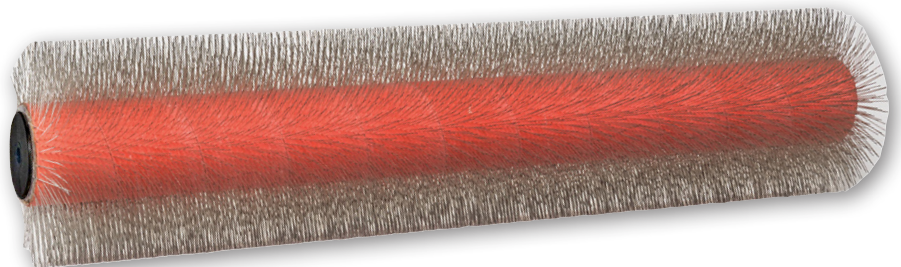
Choose Your Roller:

Item No.	Description
1/2" SUPER SHARP	
48090	9" Metal-Tined Roller, 1/2" Tines
48091	18" Metal-Tined Roller, 1/2" Tines
48092	24" Metal-Tined Roller, 1/2" Tines

Item No.	Description
1-1/4" SUPER SHARP	
48093	9" Metal-Tined Roller, 1-1/4" Tines
48094	18" Metal-Tined Roller, 1-1/4" Tines
48095	24" Metal-Tined Roller, 1-1/4" Tines

Metal-Tined Spiked Roller Covers

Midwest Rake® spiked rollers are premium quality and engineered to provide maximum performance to minimize out-gassing and promote leveling characteristics of resinous coatings as well as resurfacing materials of all types. A more dense steel tine configuration, modeled after the traditional "porcupine" roller. These rollers have a 1-1/2" aluminum core. Metal-tined spiked rollers work remarkably well with cementitious and gypsum based overlays to promote self-leveling and reduce out-gassing. All spiked rollers come with 3/8" black end-caps.



RIBBED ROLLERS

Ribbed Rollers

Ribbed rollers are used to evenly distribute resin and other bonding materials when installing fiberglass and other high performance fabric and mesh laminate reinforcement systems. The use of these rollers enhances the fiberglass / fabric saturation and containment, while removing air bubbles and pockets. These rollers are useful in the installation of tank linings, concrete secondary containment systems and concrete mortar laminate reinforcement flooring applications. Aluminum rollers are the industry standard. All styles have fins designed with just enough angle to increase strength without sacrificing air relief. These rollers are designed to reduce sheared fiber by insuring a radius is machined on each fin. Resin can be burned off with a torch.

Replaceable Sleeve Ribbed Rollers

These aluminum rollers fit directly on standard paint roller frames. They have a 2" diameter with a 1-1/2" diameter center to slip over paint roller frames just like a paint roller cover. The rollers are made from strong 6063 aluminum and are machined to exacting standards of the 2" aluminum rollers shown below. They are sold as complete tools, with replacement sleeves available.

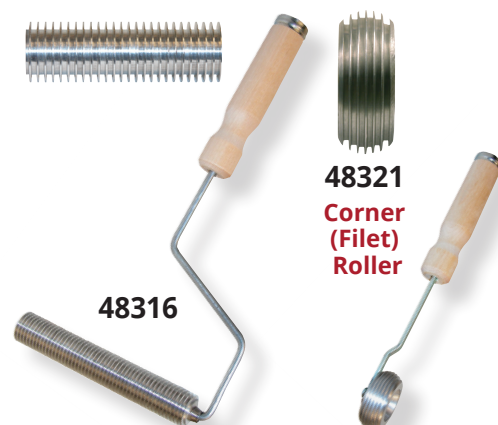
Item No.	Description
48304	4" x 2" Aluminum Ribbed Roller Replacement Sleeve, 1-1/2" Inside Diameter - Use with 48404 Roller Frame
48309	9" x 2" Aluminum Ribbed Roller Replacement Sleeve, 1-1/2" Inside Diameter - Use with 48540, 48403, & 48400 Roller Frames
48318	18" x 2" Aluminum Ribbed Roller Sleeve, 1-1/2" Inside Diameter - Use with 48410 & 48418 Roller Frames



Ribbed Rollers with Wooden Handles

These aluminum rollers have a traditional deep fin, straight groove design. Machined radius fin corners reduce glass fiber shearing. They have reduced clearance for less resin contamination. These rollers come on strong galvanized steel frames with undersized handle bore for a tight fit and long life. The wood handles are steel ferruled and accept standard threaded extension handles (see page 28).

Item No.	Description
48313	3" Aluminum Ribbed Roller, 1" Diameter, Wood Handle - Complete Tool
48316	6" Aluminum Ribbed Roller, 1" Diameter, Wood Handle - Complete Tool
48326	6" Aluminum Ribbed Roller, 2" Diameter, Wood Handle - Complete Tool
48329	9" Aluminum Ribbed Roller, 2" Diameter, Wood Handle - Complete Tool



Specialty Ribbed Rollers

These specialty rollers are designed for concave surfaces and filets where flat rollers are not effective. All of these rollers come with strong steel frames and ferrule reinforced wood handles with handle adapters that accept standard extension handles (see page 28 for handles). All of these rollers are machined with the deepest fins possible for efficient air relief and excellent lay up properties.

Item No.	Description
48321	3/4" Aluminum Corner (Filet) Ribbed Roller, 2-1/2" Diameter - Complete Tool
48323	3" Aluminum (Barrel) Radius Ribbed Roller, 2" Diameter - Complete Tool
48310	3" Aluminum Inverted Radius Ribbed Roller, 1" Diameter - Complete Tool



Fiberglass Scissors

These 10" knife-edge fiberglass scissors are very rigid and American Made. The knife edge design insures clean, crisp shearing action for all fiberglass materials. The increased blade angle of 45° over the 15° angle of standard scissors reduces effort and leaves a cleaner, more even cut.



BROOMS, BRUSHES & SCRAPERS



Duo Broom Best for the removal of "fine" materials because of its combination of strong 3" polypropylene bristles with an added layer of outside bristles. Features our super-strong, unique and durable overlapping gusset bracing system.

Item No.	Description
82904	Seymour® S500 Industrial™ 24" Duo Broom, 60" Ergonomic Blue Powder-Coated Aluminum Handle
82906	Seymour® S500 Industrial™ 36" Duo Broom, 60" Ergonomic Blue Powder-Coated Aluminum Handle

Street / Landscape Broom Stiff, 5" orange poly-corn bristles and comes with our super-strong, unique and durable overlapping gusset bracing system.

Item No.	Description
82118	Structron® 18" Street / Landscape Broom, 60" Ergonomic Yellow Powder-Coated Aluminum Handle

General Purpose Broom Features our super-strong, unique and durable overlapping gusset bracing system.

Item No.	Description
82124	Structron® 24" General Purpose Broom, 60" Ergonomic Yellow Powder-Coated Aluminum Handle
82136	Structron® 36" General Purpose Broom, 60" Ergonomic Yellow Powder-Coated Aluminum Handle

Protective Coating Brush Polypropylene bristles plus a squeegee blade make this an ideal protective coating application tool.

Item No.	Description
82900	18" Coating Brush with Squeegee, 60" x 15/16" Metal Threaded Tip Wood Handle
47240	18" Protective Coating Brush with Squeegee Blade (Head Only)

Pro Roller Pad System Microfiber penetrates surface pores to remove tiny dust particles. Velcro backing makes changing mop heads quick & easy.

Item No.	Description
48503-18	18" Microfiber Pad - 5" wide
48503-24	24" Microfiber Pad - 5" wide
48581-18	Frame for 18" Microfiber Pad
48581-24	Frame for 24" Microfiber Pad
48580	48" - 72" Telescopic Pole For Microfiber Pad System

Scrapers

The 16 gauge stainless steel blade, available in widths of 8", 12" and 16", is attached to our super-strong, unique and durable overlapping gusset bracing system along with a 66" powder-coated aluminum handle. This is one of the most powerful scrapers on the market. The blade can be sharpened for project needs.

	Blade Width		
Description	Item No. 8"	Item No. 12"	Item No. 16"
Stainless Steel Scraper	78908	78912	78916
Replacement Blade	SP50027	SP50028	SP50029



POLES & EXTENSION HANDLES

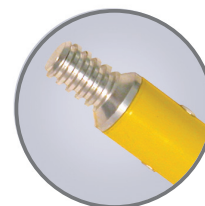
Extension Handle Options

Powder-coated aluminum handles with milled aluminum threaded tips - for use with threaded handle adapters. We designed this milled threaded tip handle to provide the "tightest" fit with our tools that are available with our exclusive threaded handle adapter. These handles have a durable, milled threaded aluminum tip for added strength - no more broken tips - and come in 60", 66", and 82" lengths. We also have a 60" extension handle available to use with these handles which has a threaded milled aluminum tip on one end and a threaded milled aluminum receptacle on the other end.

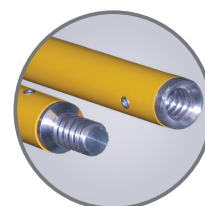
Hardwood Handles - We offer a variety of high quality hardwood handles, with either a tapered tip or a metal threaded tip.

Item No.	Description
A. SA20173	60" PCAH* Handle with Aluminum Threaded Tip
B. SA20174	66" PCAH* Handle with Aluminum Threaded Tip
C. SA20175	82" PCAH* Handle with Aluminum Threaded Tip
D. SA20228	60" Yellow Extension Aluminum Handle, Threaded Tip and Socket
E. SP20220	1-1/8" x 60" Hardwood Handle, Tapered Tip
F. SP20221	1-1/8" x 72" Hardwood Handle, Tapered Tip
G. SP20215	15/16" x 60" Hardwood Handle, Metal Threaded Tip
H. SP20216	15/16" x 72" Hardwood Handle, Metal Threaded Tip
I. 60320	60", 3 Piece Aluminum Handle, Threaded Handle Adapter

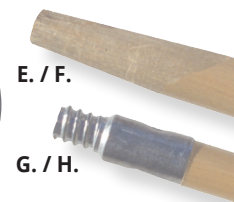
*Powder-Coated Aluminum Handle



A. / B. / C.



D.



E. / F.

G. / H.



I.

Fiberglass Extension Handles - Prized by painting contractors, cleaning professionals and other users who look for extended reach with maximum adjustability, our extension handles have been top-sellers for decades. Our patented STÅ-LOK® mechanism is the most convenient and reliable to use. Just twist to lock in any position.



Structron® Superhandle® II Ultra Extension Handle, Tip Milled from Solid Aluminum Bar

- Ultra milled tip
- Fiberglass telescoping handle with cushion grip
- Ultra threaded tip replacement Kit (60279)

Item No.	Description
60270	1' - 2' Handle with STÅ-LOK® & End Cap
60271	2' - 4' Handle with Dual Lock
60276	3' - 6' Handle with Dual Lock
60272	4' - 8' Handle with Dual Lock
60273	6' - 12' Handle with Dual Lock
60274	8' - 16' Handle with Dual Lock
60275	8' - 24' Handle with Dual Lock



Structron® Superhandle® II extension handle

- Threaded #5 Acme aluminum tip
- Fiberglass telescoping handle with cushion grip
- Threaded tip replacement kit (60259)

Item No.	Description
60250	1' - 2' Handle with STÅ-LOK® & End Cap
60251	2' - 4' Handle with Dual Lock
60256	3' - 6' Handle with Dual Lock
60252	4' - 8' Handle with Dual Lock
60253	6' - 12' Handle with Dual Lock
60254	8' - 16' Handle with Dual Lock
60255	8' - 24' Handle with Dual Lock



Structron® Straight Extension Handle

- Ultra tip milled from solid aluminum bar with fiberglass handle and 7" double dip grip (60280-60282)
- Threaded #5 Acme aluminum tip with fiberglass handle with vinyl end cap (60240-60242)
- Threaded tip replacement kits (60259 & 60279)

Item No.	Description
60280	1" x 48" Handle, Ultra tip
60281	1" x 60" Handle, Ultra tip
60282	1" x 72" Handle, Ultra tip
60240	1" x 48" Handle
60241	1" x 60" Handle
60242	1" x 72" Handle



Structron® Superhandle® Extension Handle

- Threaded #5 Acme aluminum tip
- Fiberglass telescoping handle with collar lock, cushion grip
- Threaded tip replacement kit (60259)

Item No.	Description
60245	2' - 4' Handle
60244	3' - 6' Handle
60246	4' - 8' Handle
60247	6' - 12' Handle
60248	8' - 16' Handle

MISCELLANEOUS TOOLS

Solvent-Resistant Gloves

These nitrile, flock-lined, form fitting gloves are resistant to solvents used regularly within the coating industry. They are available in three sizes.



Description	Size 9 - L	Size 10 - XL	Size 11 - XXL
Solvent-Resistant Gloves (Pair)	46209	46210	46211

Disposable Nitrile Gloves

Powder free disposable nitrile gloves come 100 per box. Available in 3 sizes.



Description	Size L	Size M	Size XL
Heavyweight Nitrile Gloves	46212	46216	46213

Recycled White Cotton Knitcloth

Item No.	Description
46217	4 LB #5 Block Recycled White Cotton Knitcloth



Non-Skid Shoe Covers

Item No.	Description
46219	Blue Non-Skid Shoe Covers - 10 Pair Per Pack



Mixing Containers

Item No.	Description
46221	1 Quart Mix & Measure Container
46223	2-1/2 Quart Mix & Measure Container
46225	5 Quart Mix & Measure Container
46228	5 Gallon Project Bucket - White
46229	5 Gallon Natural Mix & Measure Bucket
46230	10 Quart Mix & Measure Container
46235	5 Liter Mixing Pitcher with Handle



Mixing Barrels

Mixing barrels can be hard to come by, reconditioned or new. The 15 gallon mixing barrel (European style) with fixed side handles and sealing lid is the standard. Used to mix more cementitious materials prior to application.

- HD polyethylene
- Belted lids
- Web or pegged handles

Item No.	Description
46240	15 Gallon Mixing Barrel
46250	15 Gallon Mixing Barrel - Reconditioned*

**Subject to availability*



Wide Boy™ Bucket & Liners

This bucket has a five gallon working capacity to save refill time. Designed for large jobs and the professional in mind. Resists solvents and paint buildup.

- 14" x 24" x 10"
- Built-in 19" wide roll-off area
- No tip design & heavy-duty 5/16" galvanized bail
- Comfort grip for moving when filled
- Durable, seamless, green polypropylene



Item No.	Description
48467	Sherlock® Wide Boy™ Bucket with Handle - 5 Gallon (8614)
48468	Quick N Clean™ Wide Boy™ Liner - 5-pk (R472)

Polyethylene Tape

Durable, moisture resistant sealing tape with a synthetic rubber-based pressure-sensitive adhesive. This tape is designed to adhere to a variety of surfaces and otherwise difficult-to-bond materials.



Item No.	Description
46218	PE35 2" Red Polyethylene Tape NEW

Self Leveling Kits

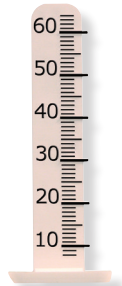
Complete kit includes all the items required to mix and install self-leveling products.

Item No.	Description
67410	8 Piece Self-Leveling Kit



Stick-Ems™ Level Pegs

Stick-Ems™ Level Pegs are used to achieve a level surface. Use them with your leveling unit. Cut to height and stick this flexible, self-adhesive rubber / vinyl peg right to the substrate. Pour leveling product right over the top. The peg will not float to the surface and becomes part of the cement matrix. Gauged in millimeters up to 65 mm (2-1/2").



Small (65mm) Pack of 100	Description
46280	Stick-Ems™ Level Pegs



48466

48470

48493

48530

Paint Trays & Accessories

48466	Big Ben® Tray - 1 Gallon Capacity (BR412)
48470	Big Ben® Tray Liner (R478) NEW
48493	Deluxe Metal Tray (R402)
48494	Deluxe Metal Tray Liner (R406)
48530	Acme™ Deluxe 5-Gallon Grid NEW

MIXERS & MEASURING WHEELS

Low Viscosity Mixers

The Pro-Grade mixers are the choice of many contractors. These mixers have low shear for minimal air entrapment while mixing. The Pro-Grade mixers are constructed of quality powder-coated steel and are available in 2 sizes; a 1-2 gallon paddle with a 3-1/2" turbine style head on a 19-3/4" x 5/16" diameter hex shaft or a 2-5 gallon paddle with a 4-3/4" turbine style head on a 23-1/2" x 3/8" diameter hex shaft.

Jiffy Style Mixers are also available in two sizes; a 1-2 gallon and a 2-5 gallon. They are made of 304 stainless steel and fit all 1/4" - 3/4" chucked power tools. The blade actions are characterized by a smooth, thorough, non-air sucking and non-splashing action.

Our Helix mixers are made from polypropylene and specially designed to reach the bottom edges of the paint can for a thorough mix. It mounts to your hex-chuck power drill for impressive speed.

Item No. Description

47444	Large Pro-Grade Low Viscosity Mixing Paddle, 2-5 Gallon
47432	Jiffy Style Mixer Blade, 1-2 Gallons
47434	Jiffy Style Mixer Blade, 2-5 Gallons
47431	1 Gallon Helix Mixer
47433	5 Gallon Helix Mixer
47436	2-3/8" x 17" Paint Mixer
47439	4" x 30" Paint Mixer



High Viscosity Mixing Paddles

These mixers are used by those in the decorative concrete, and stamping markets. The "football" shaped cage configurations are ideal for mixing more viscous "topping" and cementitious materials. The larger 10" x 6" head is designed for barrel mixing. The smaller 6" x 4" head is ideal for 5 gallon quantities. Both mixers effectively remove air without splash-out. Both have an overall length of 26" with a hex shaft.

Item No. Description

47425	Large High Viscosity Oval Mixing Paddle - 26" Shaft
47426	Large High Viscosity Oval Mixing Paddle - 36" Shaft
47428	Box Mixer, 5" Diameter, 7/16" x 30" Shaft
47429	Box Mixer, 5" Diameter, 7/16" x 23" Hex Shaft

Measuring Wheels

A fast, practical way to measure distance, indoors or outdoors, on any surface.

Item No. Description

85701	Kenyon® Small Telescoping 1' Measuring Wheel
85703	Kenyon® GroundScaper 3' Measuring Wheel
85704	Kenyon® GroundScaper 4' Measuring Wheel
85712	Kenyon® Wide-Trak 2' Measuring Wheel
85713	Kenyon® Pro-Grade 3' Measuring Wheel
85714	Kenyon® Pro-Grade 4' Measuring Wheel



MERCHANDISING

FLOOR MERCHANDISERS: Floor merchandisers can double or triple your inventory turns by attracting customer attention and maximizing space efficiently. We have several options available and can customize a display to fit your needs.



360 DEGREE TOWER MERCHANDISER

The 360 degree tower merchandiser only takes up 3 square feet of floor space and provides complete display of tools from three sides. Options are available which allow for all types of hooks and baskets to be utilized. Comes complete with gridwall, hooks, and full color signage.

SKU - 58015
NO TOOLS INCLUDED

SKU - 58016
NO TOOLS INCLUDED



MINI 2' MERCHANDISER

This small free standing display rack will allow you to display core tools while maximizing space. Comes complete with gridwall, legs, hooks, and full color signage

SKU - 58013
NO TOOLS INCLUDED



EXTENSION HANDLE RACK



SKU - YDIS104
NO TOOLS INCLUDED

BROOM DISPLAY RACK



SKU - 82999
NO TOOLS INCLUDED



MINI 2' FOOTWEAR MERCHANDISER

Set yourself apart by displaying various types of footwear with this 2' free standing display rack. Comes complete with gridwall, legs, hooks, and full color signage

SKU - 58014
FOOTWEAR NOT INCLUDED

Item No. Description

58013	Mini 2' Standard Display Rack - No Tools Included
58014	Mini 2' Footwear Display Rack - Footwear Not Included
58015	Merchandiser Display - Grids & Signs, Catalogs, Hooks - No Tools Included
58016	Merchandiser Display - Slatgrids & Signs, Catalogs, Hooks - No Tools Included
82999	Broom Merchandiser Rack
YDIS003	4" Black Steel Gridwall Hook
YDIS004	9" Black Steel Magazine Holder for Gridwall
YDIS008	8" Black Steel Gridwall Hook
YDIS104	20" x 20" Steel Rack for Fiberglass Extension Handles
YDIS107	10" Black Steel Pegboard Hook
YDIS181	10" x 36" Midwest Rake® Sign
YDIS185	12" x 24" Coating Application Sign
YDIS191	T-Shaped Legs for Gridwall
YDIS209	Shoe-In™ Promo Packet

Item No. Description

YDIS214	36" x 36", Broom Display Rack
YDIS222	12" x 6" Acrylic Gridwall Shelf
YDIS224	22" x 7" Sign Holder for Gridwall
YDIS243	144" x 15" Three-Part Coatings Sign
YDIS244	48" x 15" Midwest Rake® Sign
YDIS274	10" x 48" Midwest Rake® Sign
YDIS290	4" Black Steel Pegboard Hook
YDIS291	18" Black Adjustable Roller Cover Basket for Pegboard
YDIS292	Double Sided Roller Hanger for Pegboard
YDIS293	2' x 6' Black Steel Slatgrid
YDIS294	2' x 8' Black Steel Slatgrid
YDIS295	7" x 22" PVC, Double Sided, Footwear Sign
YDIS302	EasySqueegee® Promo Pack
YDIS320	SureSpikes™ Promo Pack

MIDWEST RAKE®

COATINGS APPLICATION TOOLS, APPLICATORS & SUPPLIES



SEYMOUR MIDWEST • P.O. BOX 1674, WARSAW, IN 46581-1674
P 844-SEYMOUR (739-6687) • 574-267-7875 • F 574-267-8508
SEYMOURMIDWEST.COM

SPECIFICATIONS SUBJECT TO CHANGE WITHOUT NOTICE | REV07012023